

SUBMITTAL DATA: MFZ-KJ12NA-U1 & MUFZ-KJ12NAHZ-U1

12,000 BTU/H FLOOR-MOUNTED HEAT PUMP SYSTEM

Job Name:	Location:	Date:
Purchaser:	Engineer:	
Submitted to:	For <input type="checkbox"/> Reference <input type="checkbox"/> Approval <input type="checkbox"/> Construction	
System Designation:	Schedule No.:	

GENERAL FEATURES

- Floor-standing unit
- Standard Hybrid Catechin Prefilter filter included within indoor unit
- Quiet operation
- Choice of fan speeds: Low, Medium, High, and Super High; Auto fan speed control also included
- Bottom supply outlet operates in heat mode
- Wireless remote controller is included; PAR-40MAA wired remote controller can be installed as an option
- Indoor unit powered from outdoor unit using A-Control
- Auto restart following a power outage
- Unit can be recessed mounted into wall

Controls

- ☐ Wireless Controller (MHK2)
- ☐ Wired Remote Controller PAR-40MAA (Requires MAC-333IF-E)
- ☐ Thermostat Interface (PAC-US444CN-1)

Windscreens (ME-FR-15-17)

SPECIFICATIONS:

Rated Conditions (Capacity / Input)		
Cooling ¹	Btu/h / W	12,000 / 890
Heating at 47°F ²	Btu/h / W	13,000 / 900

Capacity Range		Minimum	Maximum
Cooling ¹	Btu/h	2,300	15,000
Heating at 47°F ²	Btu/h	2,900	22,800
Heating at 17°F ³	Btu/h	-	14,800
Heating at 5°F ⁴	Btu/h	-	13,000

¹ Cooling | Indoor: 80° F (27° C) DB / 67° F (19° C) WB; Outdoor: 95° F (35° C) DB / 75° F (24° C) WB*
² Heating at 47°F | Indoor: 70° F (21° C) DB / 60° F (16° C) WB; Outdoor: 47° F (8° C) DB / 43° F (6° C) WB*
³ Heating at 17° F | Indoor: 70° F (21° C) DB / 60° F (16° C) WB; Outdoor: 17° F (-8° C) DB / 15° F (-9° C) WB*
⁴ Heating at 5° F | Indoor: 70° F (21° C) DB / 60° F (16° C) WB; Outdoor: 5° F (-15° C) DB / 5° F (-15° C) WB*
 * Rating Conditions per AHRI Standard:

Operating Conditions (Indoor Intake Air Temp.) (Max. / Min.)	
Cooling ⁵	90° F (32° C) DB / 67° F (19° C) DB
Heating	80° F (27° C) DB / 70° F (21° C) DB

Operating Conditions (Outdoor Intake Air Temp.) (Max. / Min.)	
Cooling ⁵	115 F (46° C) DB / 14° F (-10° C) DB
Heating	75° F (24° C) DB / -14° F (-25° C) DB**

⁵ Applications should be restricted to comfort cooling only; equipment cooling applications are not recommended for low ambient temperature conditions.
 ** System cuts out at -18° F (-28° C) to avoid thermistor error and automatically restarts at -4° F (-20° C).

AHRI Efficiency Ratings		
SEER (SEER2) / EER (EER2) / HSPF (HSPF2)		25.5 (26.7) / 13.6 (13.6) / 12.0 (10.6)
COP at 47°F 17°F		4.2 / 2.77
Electrical		
Electrical Power Requirements		208 / 230V, 1-Phase, 60 Hz
MCA: Indoor Outdoor *	A	1 11
Recommended Fuse/ Breaker Size	A	15

Should this document be altered or changed without MESCA's permission, it becomes null and void. MESCA assumes no responsibility for any consequences in such cases.

Specifications are subject to change without notice.



Indoor Unit		
Blower Motor ECM Output		0.62 F.L.A. 30 W
SHF Moisture Removal		0.7 2.7 pt./h
Field Drainpipe Size O.D.	In.(mm)	5/8 (15)

Outdoor Unit		
Compressor		DC INVERTER-driven Twin Rotary
Fan Motor (ECM)	F.L.A.	0.50

Airflow Rate (Quiet - Lo - Med - Hi - Super Hi)			
Indoor (Cooling)	DRY	CFM	138-198-272-360-417
	WET		117-168-231-306-354
Indoor (Heating)	DRY	CFM	138-191-254-328-417
Outdoor			1,215 / 1,201

Sound Pressure Level (Quiet - Lo - Med - Hi - Super Hi)		
Indoor: Cooling Heating	dB(A)	21-27-34-41-46 21-27-34-40-46
Outdoor: Cooling Heating		48 50

Unit Dimensions		
Indoor Outdoor (H x W x D)	In.	23-5/8 x 29-17/32 x 8-15/32 21-5/8 x 31-1/2 x 11-1/4
	mm	600 x 750 x 215 550 x 800 x 285

Unit/Package Weight		
Unit: Indoor Outdoor	Lbs.(kg)	33 (15) 83 (38)
Package: Indoor Outdoor	Lbs.(kg)	41 (18.5) 90 (40.5)

External Finish	
Indoor Outdoor	Munsell 1.0Y 9.2 / 0.2 Munsell No. 3Y 7.8 / 1.1

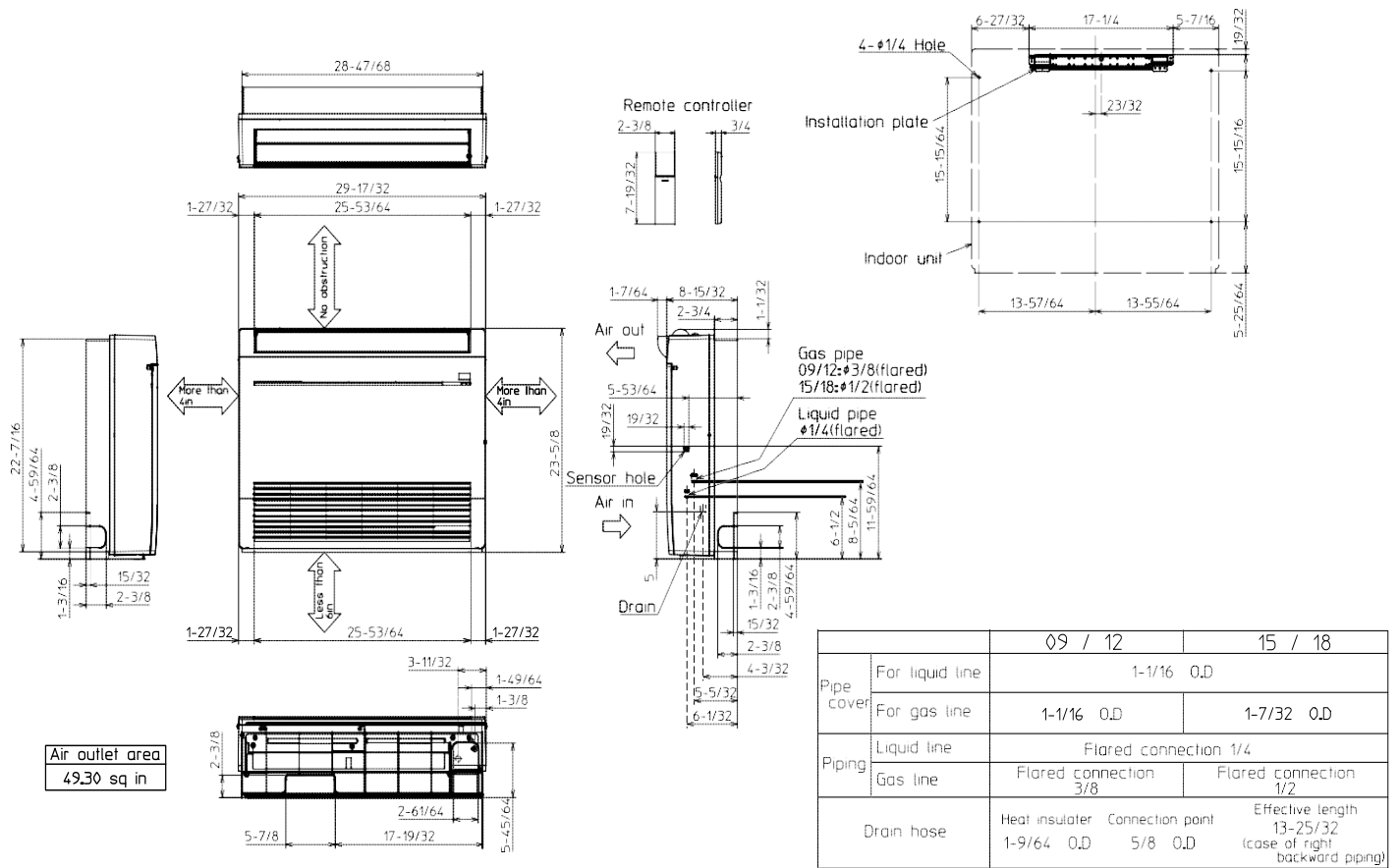
Refrigerant	R410A; 2 lb. 10 oz.
-------------	---------------------

Refrigerant Piping(Flared)		
Liquid (High Pressure)	In.(mm)	1/4 (6.35)
Gas (Low Pressure)		3/8 (9.52)
Max. Total Refrigerant Pipe Length (Height Diff.)	Ft. (m)	40 (12)
Max. Total Refrigerant Pipe Length (Length.)		65 (20)

DIMENSIONS: INDOOR UNIT-MFZ-KJ12NA-U1

MFZ-KJ12NA-U1

Unit: in.



Should this document be altered or changed without MESCA's permission, it becomes null and void. MESCA assumes no responsibility for any consequences in such cases.

Notes:

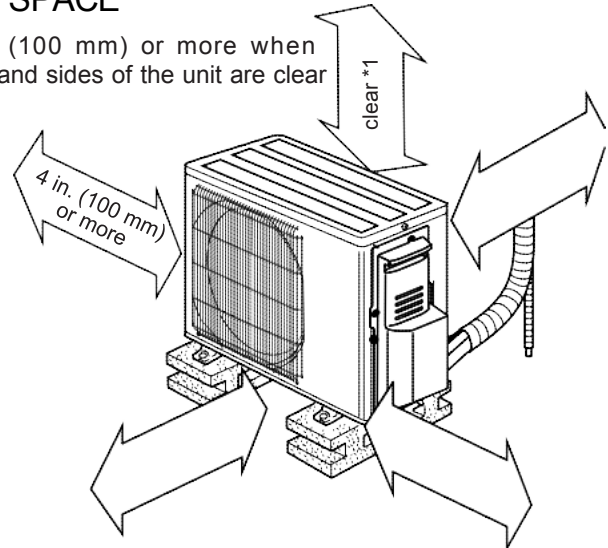
DIMENSIONS: OUTDOOR UNIT- MUFZ-KJ12NAHZ-U1

MUFZ-KJ12NAHZ-U1

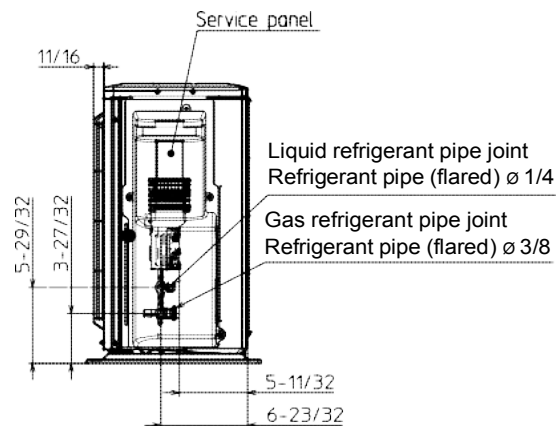
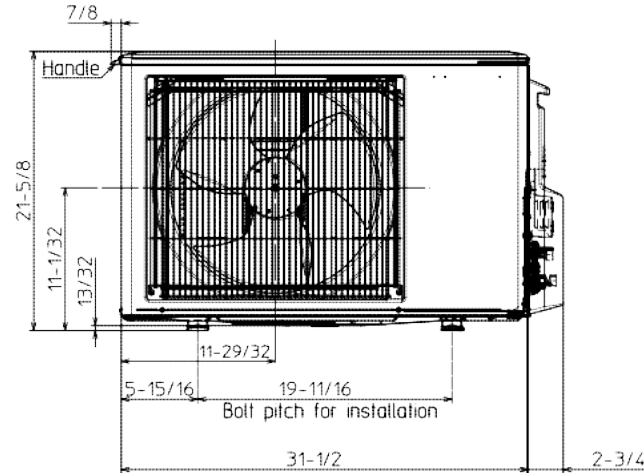
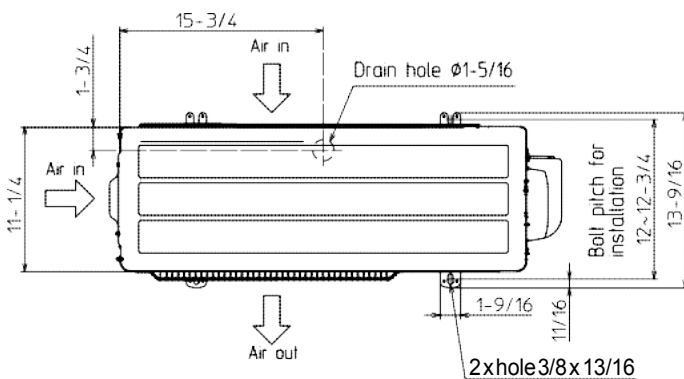
Unit: in. (mm)

REQUIRED SPACE

*1 4 in. (100 mm) or more when front and sides of the unit are clear



*2 When any 2 sides of left, right and rear of the unit are clear



Should this document be altered or changed without MESCA's permission, it becomes null and void. MESCA assumes no responsibility for any consequences in such cases.

