

SUBMITTAL DATA: MFZ-KJ18NA-U1 & MUFZ-KJ18NAHZ-U1

18,000 BTU/H FLOOR-MOUNTED HEAT PUMP SYSTEM

Job Name:	Location:	Date:
Purchaser:	Engineer:	
Submitted to:	For <input type="checkbox"/> Reference <input type="checkbox"/> Approval <input type="checkbox"/> Construction	
System Designation:	Schedule No.:	

GENERAL FEATURES

- Floor-standing unit
- Standard Hybrid Catechin Prefilter filter included within indoor unit
- Quiet operation
- Choice of fan speeds: Low, Medium, High, and Super High; Auto fan speed control also included
- Bottom supply outlet operates in heat mode
- Wireless remote controller is included; PAR-40MAA wired remote controller can be installed as an option
- Indoor unit powered from outdoor unit using A-Control
- Auto restart following a power outage
- Unit can be recessed mounted into wall

Controls

- ☐ Wireless Controller (MHK2)
- ☐ Wired Remote Controller PAR-40MAA (Requires MAC-333IF-E)
- ☐ Thermostat Interface (PAC-US444CN-1)

Windscreens (ME-FR-24)

SPECIFICATIONS:

Rated Conditions (Capacity / Input)

Cooling ¹	Btu/h / W	17,000 / 1,350
Heating at 47°F ²	Btu/h / W	21,000 / 1,730

Capacity Range		Minimum	Maximum
Cooling ¹	Btu/h	5,300	22,500
Heating at 47°F ²	Btu/h	5,700	29,000
Heating at 17°F ³	Btu/h	-	23,000
Heating at 5°F ⁴	Btu/h	-	21,000

¹ Cooling | Indoor: 80° F (27° C) DB / 67° F (19° C) WB; Outdoor: 95° F (35° C) DB / 75° F (24° C) WB*
² Heating at 47°F | Indoor: 70° F (21° C) DB / 60° F (16° C) WB; Outdoor: 47° F (8° C) DB / 43° F (6° C) WB*
³ Heating at 17°F | Indoor: 70° F (21° C) DB / 60° F (16° C) WB; Outdoor: 17° F (-8° C) DB / 15° F (-9° C) WB*
⁴ Heating at 5°F | Indoor: 70° F (21° C) DB / 60° F (16° C) WB; Outdoor: 5° F (-15° C) DB / 5° F (-15° C) WB*
 * Rating Conditions per AHRI Standard:

Operating Conditions (Indoor Intake Air Temp.) (Max. / Min.)

Cooling ⁵	90° F (32° C) DB / 67° F (19° C) DB
Heating	80° F (27° C) DB / 70° F (21° C) DB

Operating Conditions (Outdoor Intake Air Temp.) (Max. / Min.)

Cooling ⁵	115 F (46° C) DB / 14° F (-10° C) DB
Heating	75° F (24° C) DB / -14° F (-25° C) DB**

⁵ Applications should be restricted to comfort cooling only; equipment cooling applications are not recommended for low ambient temperature conditions.
 ** System cuts out at -18° F (-28° C) to avoid thermistor error and automatically restarts at -4° F (-20° C).

AHRI Efficiency Ratings

SEER (SEER2) / EER (EER2) / HSPF (HSPF2)	21.0 (22.0) / 12.6 (12.6) / 11.3 (10.3)
COP at 47°F 17°F	3.5 / 2.62

Electrical

Electrical Power Requirements	208 / 230V, 1-Phase, 60 Hz
MCA: Indoor Outdoor *	A 1 16
Recommended Fuse/ Breaker Size	A 20



MFZ-KJ18NA-U1



MUFZ-KJ18NAHZ-U1



Wireless Remote Controller

Indoor Unit

Blower Motor ECM Output	0.72 40 W
SHF Moisture Removal	0.65 4.4 pt./h
Field Drainpipe Size O.D.	In.(mm) 5/8 (15)

Outdoor Unit

Compressor	DC INVERTER-driven Twin Rotary
Fan Motor (ECM)	F.L.A. 0.93

Airflow Rate (Quiet - Lo - Med - Hi - Super Hi)

Indoor (Cooling)	DRY	CFM	198-254-311-392-431
	WET		168-216-264-333-366
Indoor (Heating)	DRY		212-268-328-399-470
Outdoor			1,653 / 1,730

Sound Pressure Level (Quiet - Lo - Med - Hi - Super Hi)

Indoor: Cooling Heating	dB(A)	28-33-38-43-47 29-35-40-45-49
Outdoor: Cooling Heating		51 55

Unit Dimensions

Indoor Outdoor (H x W x D)	In.	23-5/8 x 29-17/32 x 8-15/32 34-5/8 x 33-1/16 x 13
	mm	600 x 750 x 215 880 x 840 x 330

Unit/Package Weight

Unit: Indoor Outdoor	Lbs.(kg)	33 (15) 124 (56)
Package: Indoor Outdoor	Lbs.(kg)	41 (18.5) 144 (65)

External Finish

Indoor Outdoor	Munsell 1.0Y 9.2 / 0.2 Munsell No. 3Y 7.8 / 1.1
------------------	---

Refrigerant	R410A; 3 lb. 5 oz.
-------------	--------------------

Refrigerant Piping(Flared)

Liquid (High Pressure)	In.(mm)	1/4 (6.35)
Gas (Low Pressure)		1/2 (12.7)
Max. Total Refrigerant Pipe Length (Height Diff.)	Ft. (m)	50 (15)
Max. Total Refrigerant Pipe Length (Length.)		100 (30)

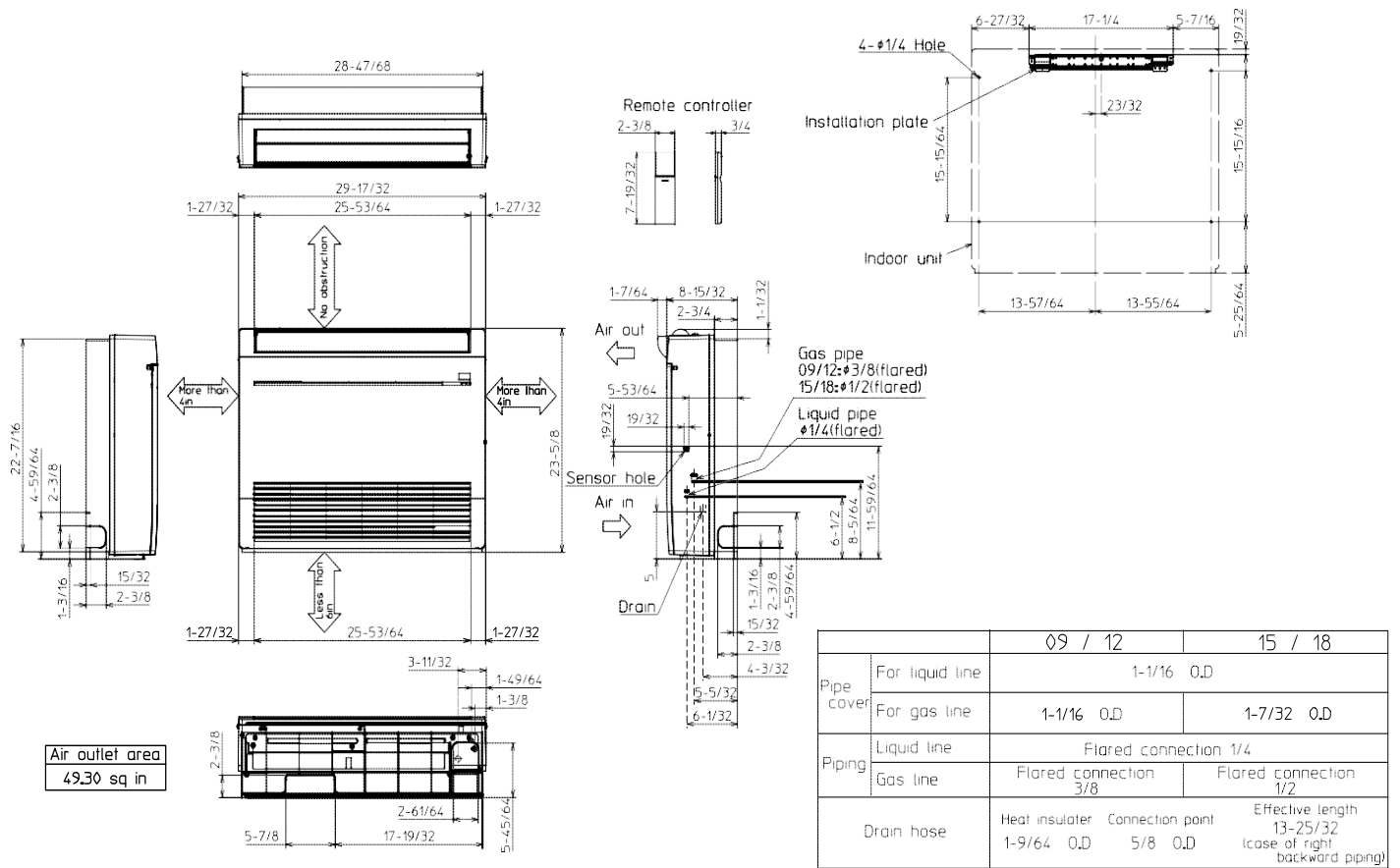
Should this document be altered or changed without MESCA's permission, it becomes null and void. MESCA assumes no responsibility for any consequences in such cases.

Specifications are subject to change without notice.

DIMENSIONS: INDOOR UNIT-MFZ-KJ18NA-U1

MFZ-KJ18NA-U1

Unit: in.



Should this document be altered or changed without MESCA's permission, it becomes null and void. MESCA assumes no responsibility for any consequences in such cases.

Notes:

Specifications are subject to change without notice.

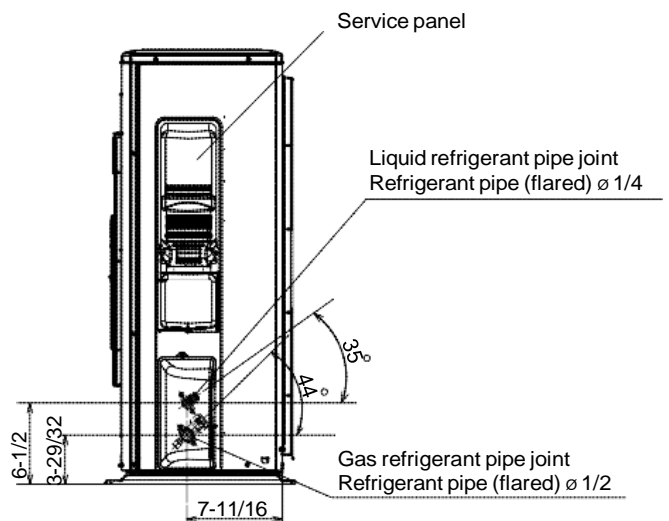
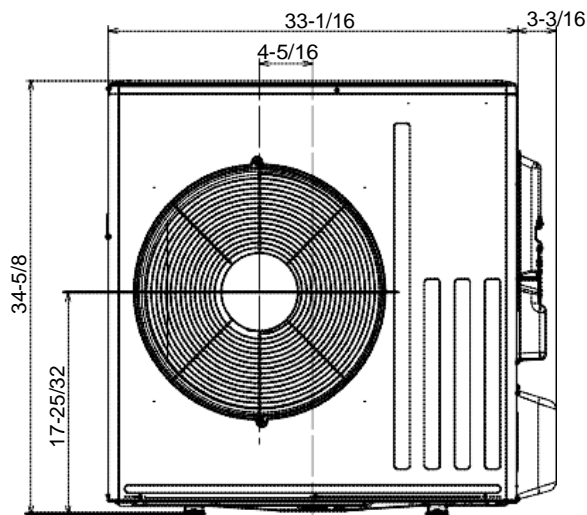
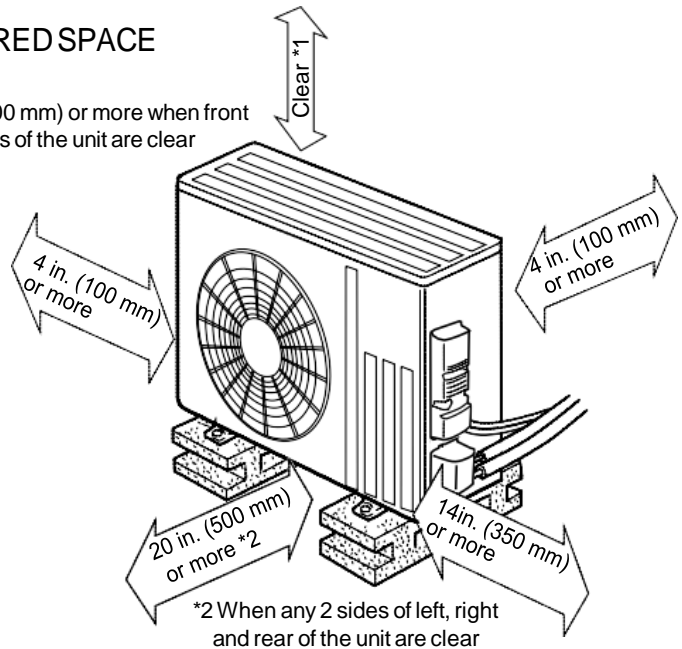
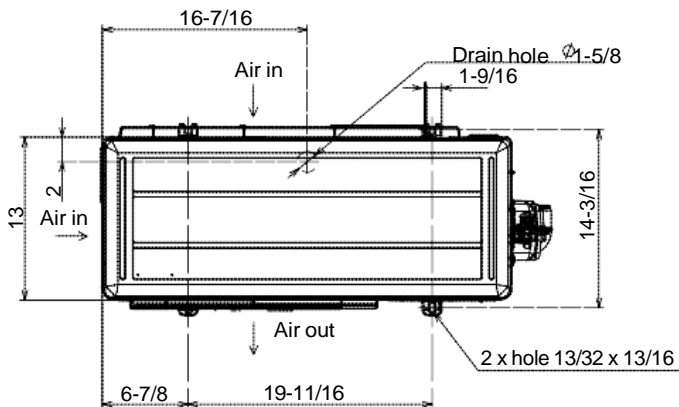
DIMENSIONS: OUTDOOR UNIT- MUFZ-KJ18NAHZ-U1

MUFZ-KJ18NAHZ-U1

Unit: in. (mm)

REQUIRED SPACE

*1 20 in. (500 mm) or more when front and sides of the unit are clear



Should this document be altered or changed without MESCA's permission, it becomes null and void. MESCA assumes no responsibility for any consequences in such cases.

