

SUBMITTAL DATA: MSZ-HM18NA-U1 & MUZ-HM18NAH-U1

18,000 BTU/H WALL-MOUNTED HEAT PUMP SYSTEM

Job Name:	Location:	Date:
Purchaser:	Engineer:	
Submitted to:	For <input type="checkbox"/> Reference <input type="checkbox"/> Approval <input type="checkbox"/> Construction	
System Designation:	Schedule No.:	


ACCESSORIES:

Windscreens (ME-FR-15-17)

Controls

Wired Remote Controller (PAR-40MAA)
 Wireless Controller (MHK2)
 Simple MA Remote Controller (PAC-YT53CRAU-J)
 Thermostat Interface (PAC-US444CN-1)
 System Control Interface (MAC-334IF-E)

#3	Test condition	Indoor air condition (°F)		Outdoor air condition (°F)	
		Dry bulb	Wet bulb	Dry bulb	Wet bulb
SEER (Cooling)	"A-2" Cooling steady state at rated compressor speed	80	67	95	(75)
	"B-2" Cooling steady state at rated compressor speed	80	67	82	(65)
	"B-1" Cooling steady state at minimum compressor speed	80	67	82	(65)
	"F-1" Cooling steady state at minimum compressor speed	80	67	67	(53.5)
	"E-V" Cooling steady state at intermediate compressor speed #4	80	67	87	(69)
HSPF (Heating)	"H1-2" Heating steady state at rated compressor speed	70	60	47	43
	"H3-2" Heating at rated compressor speed	70	60	17	15
	"H0-1" Heating steady state at minimum compressor speed	70	60	62	56.5
	"H1-1" Heating steady state at minimum compressor speed	70	60	47	43
	"H2-V" Heating at intermediate compressor speed #4	70	60	35	33
	ARI				

#4: at intermediate compressor speed
 = ("Rated compressor speed" - "minimum compressor speed") / 3 + "minimum compressor speed".

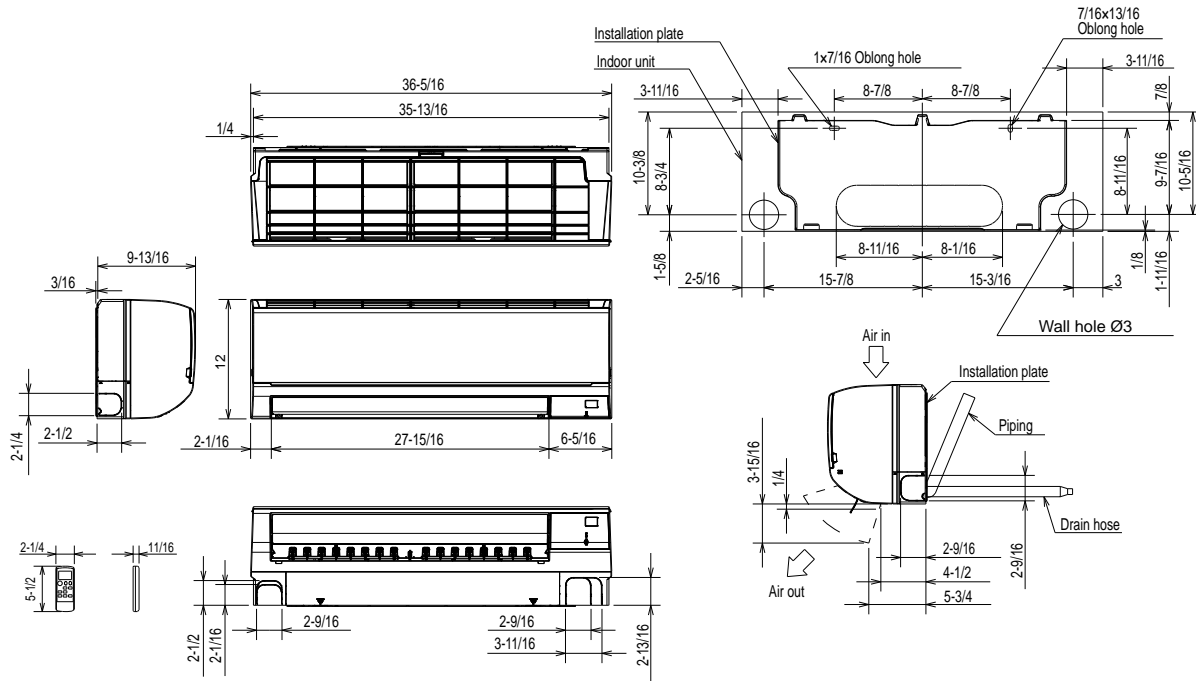
Cooling	Rated Capacity (*1)	Btu/h	17,200	
	Capacity Range	Btu/h	5,800 - 18,000	
	Total input (*1)	W	1,598	
	Energy Efficiency	EER / EER2 (*1)		10.5 / 10.5
		SEER / SEER2 (*3)		18.0 / 19.0
	Moisture Removal	Pints/h	2.1	
Heating at 47°F	Rated Capacity (*1)	Btu/h	18,000	
	Capacity Range	Btu/h	5,400 - 20,900	
	Total input (*1)	W	1,548	
	HSPF / HSPF2 (Region IV) (*3)	Btu/h/W		9.0 / 8.5
Heating at 17°F	Rated Capacity (*2)	Btu/h	11,500	
	Rated Total input (*2)	W	1,258	
	Maximum Capacity (*2)	Btu/h	15,000	
	Maximum Total Input (*2)	W	1,908	
Power supply	Voltage, Phase, Cycle	208/230V, 1-phase, 60Hz		
	Indoor - Outdoor S1-S2	AC 208/230V		
Voltage	Indoor - Outdoor S2-S3	DC12-24V		
	Indoor - Remote controller	DC12V		
	MCA (*)	A	1.0	
Indoor unit	Fan Motor	F.L.A.	0.67	
	Air flow (Lo-Mid-High-Super High)	DRY(CMM)	328-431-530-625	
		WET(CMM)	295-388-477-562	
	Sound Level CLG (Low-Med-Hi-Super High)	dB (A)	30-37-42-47	
	Sound Level HTG (Low-Med-Hi-Super High)	dB (A)	30-37-42-47	
	External Finish Color	Munsell 1.0Y 9.2/0.2		
	Dimensions	W: in	36-5/16	
		D: in	9-13/16	
		H: in	12	
	Weight Unit	lbs	28	
Field Drainpipe O.D.	in	O.D. 5/8		

Outdoor unit	MCA (*)	A	10	
	MOCP (*)	A	15	
	Fan Motor	F.L.A.	0.5	
		R.L.A.	7.4	
		L.R.A.	9.3	
	Air Flow Cooling (Low-Med-High)	CFM	639 - 1,102	
	Air Flow Heating (Low-Med-High)	CFM	1,045 - 1,045 - 1,186	
	Refrigerant Control	Linear Expansion Valve		
	Defrost Method	Reverse Cycle		
	Sound Level (Cooling) (*1)	dB (A)	49	
	Sound Level (Heating) (*1)	dB (A)	51	
	External Finish Color	Munsell No.3Y 7.8/1.1		
	Dimension	W: in	31-1/2	
		D: in	11-1/4	
		H: in	21-5/8	
Weight	lbs	81		
Remote Controller	Type	Simple Wireless Remote		
Refrigerant	Type	R410A		
	Charge	lbs, oz	2.10	
	Oil	Type(Fl.oz.)	FV50S(11.8)	
Refrigerant Pipe	Liquid side O.D.	in	1/4	
	Gas side O.D.	in	1/2	
	Height Difference (Max)	ft	40	
	Length (Max.)	ft	65	
Connection Method	Indoor/Outdoor	Flared/Flared		
Operation Guarantee	Cooling	°F (°C)	90°F --> 14°F (32°C --> -10°C)	
	Heating	°F (°C)	80°F --> -15°F (26°C --> -20°C)	
Efficiency	COP at 47°F ¹	Rated Capacity	3.35	
	COP at 17°F ²	Maximum Capacity	2.19	
	COP at 5°F	Maximum Capacity	2.02	

NOTE: Test conditions are based on AHRI 210/240.

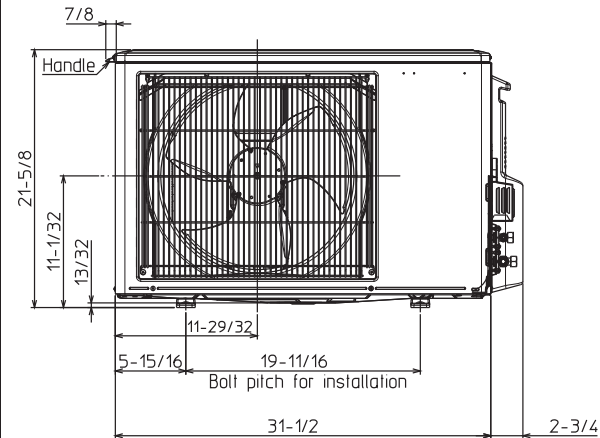
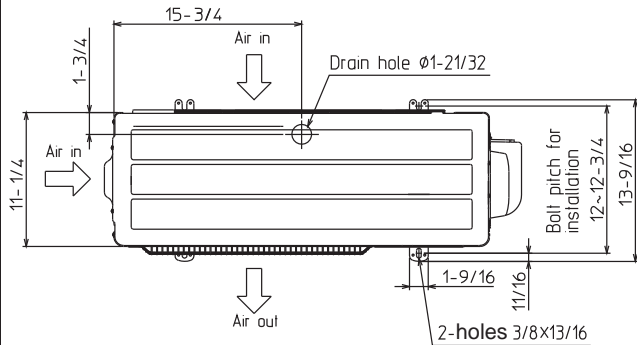
- * 1: Rating conditions (Cooling) — Indoor: 80°FDB, 67°FWB, Outdoor: 95°FDB, (75°FWB)
 (Heating) — Indoor: 70°FDB, 60°FWB, Outdoor: 47°FDB, 43°FWB
- * 2: (Heating) — Indoor: 70°FDB, 60°FWB, Outdoor: 17°FDB, 15°FWB
- * 3: Test condition

DIMENSIONS: MSZ-HM18NA-U1 & MUZ-HM18NAH-U1



MSZ-HM18NA

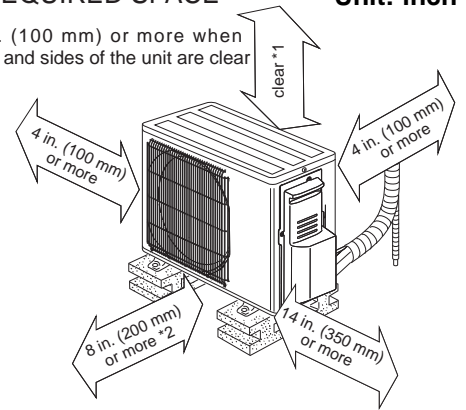
Insulation	Ø2 O.D
Liquid line	Ø5/16 15-3/8 (Flared connection Ø1/4)
Gas line	Ø15/32 13-3/8 (Flared connection Ø1/2)
Drain hose	Insulation Ø1-1/8 Connected part Ø5/8 O.D



REQUIRED SPACE

Unit: inch

*1 4 in. (100 mm) or more when front and sides of the unit are clear



*2 When any 2 sides of left, right and rear of the unit are clear

