

Job Name:	Location:		
Purchaser:	Submitted By:		
Submitted To:	Reference:	Approval:	Construction:
Engineer:	Date:	Application:	



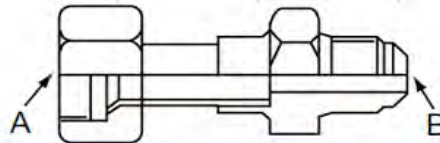
Images provided for reference purposes only

Specifications:		Model name:		PAC-MKA33BC	PAC-MKA53BC
Connectable number of indoor units				Maximum 3	Maximum 5
Power supply				Single phase, 208/230 V, 60 Hz	
Input		kW		0.003	
Running current		A		0.15	
External finish				Galvanized sheets	
Dimensions	Width	in (mm)		17-23/32 (450)	
	Depth	in (mm)		11-1/32 (280)	
	Height	in (mm)		6-11/16 (170)	
Weight		lb (kg)		15 (6.7)	16 (7.4)
Piping connection (Flare)	Branch (indoor side)*	Liquid	in (mm)	1/4 (ø6.35) × 3 {A,B,C}	
		Gas	in (mm)	3/8 (ø9.52) × 3 {A,B,C}	
	Main (outdoor side)	Liquid	in (mm)	3/8 (ø9.52)	
		Gas	in (mm)	5/8 (ø15.88)	

* The piping connection size differs according to the type and capacity of indoor units. Match the piping connection size for indoor and branch box. If the piping connection size of branch box does not match the piping connection size of indoor units, use optional different-diameter (deformed) joints to the branch box side. (Connect deformed joint directly to the branch box side.)

Accessories	Description
MAC-A454JP-E	Port Adapter
MAC-A455JP-E	Port Adapter
MAC-A456JP-E	Port Adapter
PAC-493PI	Port Adapter
PAC-SG76RJ-E	Port Adapter
MSDD-50AR-D	Brazed connection distribution pipe
MSDD-50BR-E	Brazed connection distribution pipe

Optional Port Adaptors



Model name	Connected pipes diameter	Diameter A	Diameter B
	Inch, mm	Inch, mm	Inch, mm
MAC-A454JP-E	3/8, ø9.52 → 1/2, ø12.7	3/8, ø9.52	1/2, ø12.7
MAC-A455JP-E	1/2, ø12.7 → 3/8, ø9.52	1/2, ø12.7	3/8, ø9.52
MAC-A456JP-E	1/2, ø12.7 → 5/8, ø15.88	1/2, ø12.7	5/8, ø15.88
PAC-493PI	1/4, ø6.35 → 3/8, ø9.52	1/4, ø6.35	3/8, ø9.52
PAC-SG76RJ-E	3/8, ø9.52 → 5/8, ø15.88	3/8, ø9.52	5/8, ø15.88

Notes:

Note: Mitsubishi Electric (MESCA) supports the use of only MESCA supplied and approved Snow Guard / Wind Deflectors / Windscreens and accessories for proper functioning of the unit(s).

Use of non-MESCA supported Snow Guard / Wind Deflectors / Windscreens and accessories will affect warranty coverage.

"Should this document be altered or changed without MESCA's permission, it becomes null and void. MESCA assumes no responsibility for any consequences in such cases"

All electrical work shall comply with National (CEC) and local codes and regulations.

Outdoor Unit Outline and Dimensions:

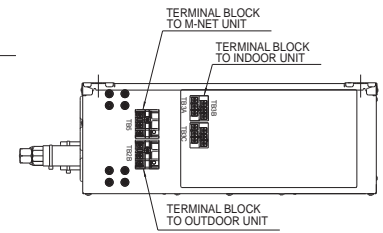
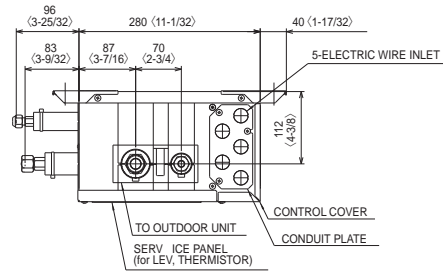
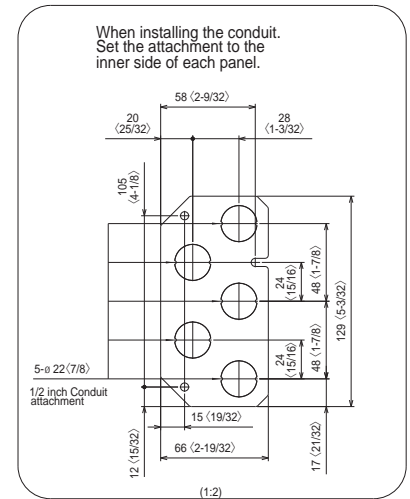
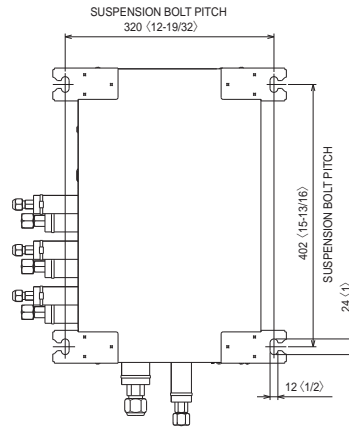
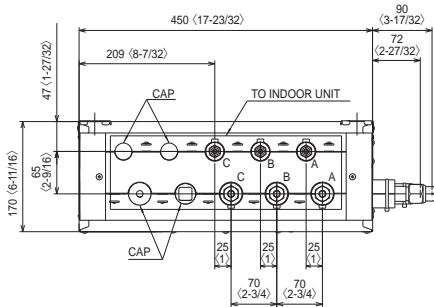
PAC-MKA33BC

Unit: mm(inch)

SUSPENSION BOLT: W3/8(M10)

REFRIGERANT PIPE FLARED CONNECTION Unit: inch

	A	B	C		TO OUTDOOR UNIT
LIQUID PIPE	1/4F	1/4F	1/4F		3/8F
GAS PIPE	3/8F	3/8F	3/8F		5/8F



PAC-MKA53BC

Unit: mm(inch)

SUSPENSION BOLT: W3/8(M10)

REFRIGERANT PIPE FLARED CONNECTION Unit: inch

	A	B	C	D	E	TO OUTDOOR UNIT
LIQUID PIPE	1/4F	1/4F	1/4F	1/4F	1/4F	3/8F
GAS PIPE	3/8F	3/8F	3/8F	3/8F	1/2F	5/8F

