

Job Name:

Schedule Reference:

Date:



### GENERAL FEATURES

- Dual set point functionality (\*1)
- Ten sizes from 15,000 to 54,000 Btu/h (P72, P96)
- Two fan speeds available (Low-High)
- Ducted fan coil supporting multiple configurations for flexible installation
- Quiet operation from 38 to 47dB(A)
- Built-in condensate lift; lifts to 27-9/16" (700mm)
- IT Terminal plug

### OPTIONS

- External Heater Adapter.....PAC-YU25HT
- Filter Box.....PAC-KE63TB-F
- Long-life Filter (LLF).....PAC-KE86LAF

**Note: Mitsubishi Electric (MESCA) supports the use of only MESCA supplied and approved accessories for proper functioning of the unit(s). Use of non-MESCA supported accessories will affect warranty coverage.**

Note:  
Ventilation air to be introduced independent of or in series with VRF indoor units.  
Please refer to local codes for the required ventilation rates specific to the application.  
\*1 – All components of the system must be compatible. For more details on system compatibility, please refer to Technical Bulletin 100-151 available on our website.

Notes:

### SPECIFICATIONS

**Capacity\***  
Cooling.....18,000 Btu/h  
Heating.....20,000 Btu/h

**Power**  
Power Source.....208 / 230V, 1-phase, 60Hz

**Power Consumption\***  
Cooling.....0.27 / 0.28 kW  
Heating.....0.25 / 0.26 kW

**Current\***  
Cooling.....1.32 / 1.25 A  
Heating.....1.21 / 1.14 A

**Minimum Circuit Ampacity (MCA \*)**  
@ 208V.....1.63 A  
@ 230V.....1.50 A

**\* All electrical work shall comply with National (CEC) and local codes and regulations.**

**Fuse Size**.....15 A

**External Finish**.....Galvanized-steel Sheet

**External Dimensions**  
Inches.....15 H x 29-3/8 W x 35-7/16 D  
mm.....380 H x 745 W x 900 D

**Net Weight**.....98 lbs. / 44 kg

**Coil Type**.....Cross Fin  
(Aluminum Plate Fin and Copper Tube)

**Fan**  
Type x Quantity.....Sirocco Fan x 1  
Airflow Rate (Low - High).....353 - 494 CFM  
External Static Pressure  
@ 208V.....0.40 - 1.00" WG  
@ 230V.....0.60 - 1.00" WG  
Motor Type.....1-phase induction motor

**Air Filter**.....Optional  
(Synthetic fiber unwoven cloth filter (LLF) and filter box recommended)

**Refrigerant Piping Dimensions**  
Liquid (High Pressure).....1/4" / 6.35 mm (Brazed)  
Gas (Low Pressure).....1/2" / 12.7 mm (Brazed)

**Drainpipe Dimension**.....O.D. 1-1/4" / 32 mm

**Sound Pressure Levels**  
Low - High.....39 - 45 dB(A)

\* Cooling / Heating capacity indicated at operation under the following conditions:

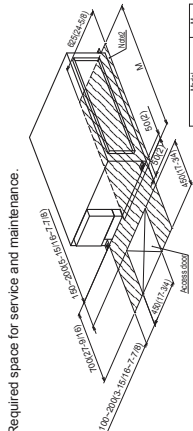
Cooling | Indoor: 80° F (27° C) DB / 67° F (19° C) WB,  
Cooling | Outdoor 95° F (35° C) DB  
Heating | Indoor: 70° F (21° C) DB,  
Heating | Outdoor 47° F (8° C) DB / 43° F (6° C) WB

Should this document be altered or changed without MESCA's permission, it becomes null and void. MESCA assumes no responsibility for any consequences in such cases.

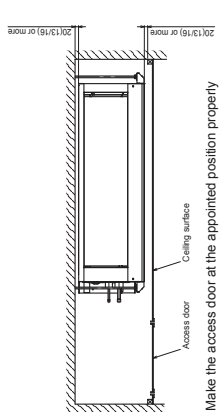
# Model: PEFY-P18NMHU-E2 – DIMENSIONS

Unit : mm(in.)

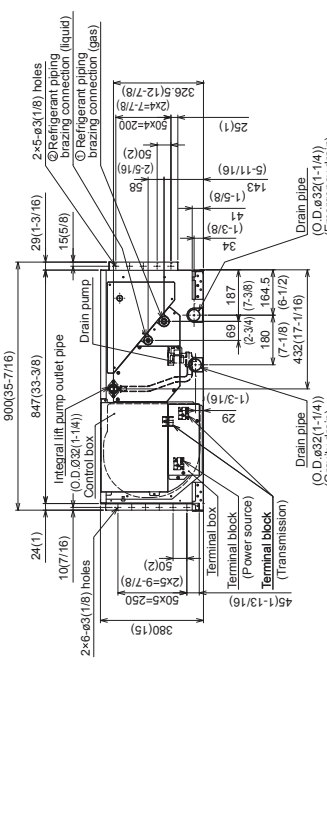
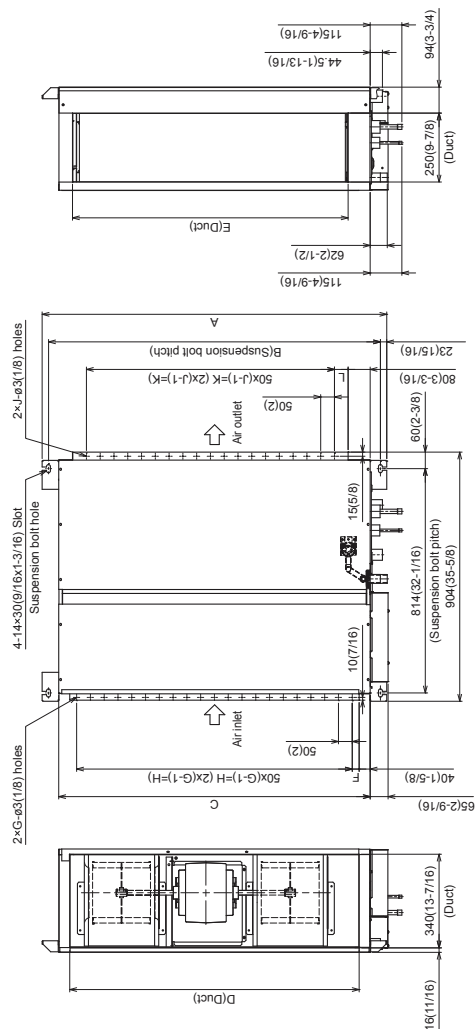
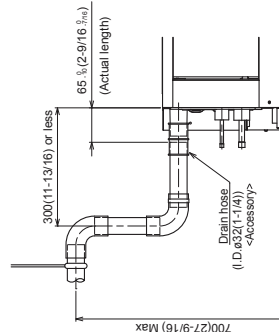
- Note 1 Use an M10 screw for the suspension bolt (field supply).
- 2. Keep the service space for the maintenance from the bottom when the heat exchanger is cleaned.
- 3. This drawing is for PEFY-P27-30-36-48-54NMHU-E2 models, which have 2 fans. PEFY-P15-16-24NMHU-E2 models have 1 fan.
- 4. Make sure to install the air filter (field supply) on the air intake side. In case field supplied air filter is used, attach it where the filter service is easily done.



Model	Fan	Weight (kg)
PEFY-P15-16-24NMHU-E2	(2)	30.0
PEFY-P27-30NMHU-E2	(4)	30.0
PEFY-P36-48-54NMHU-E2	(6)	31.5



Make the access door at the appointed position properly for service maintenance.



Model	A	B	C	D	E	F	G	H	J	K	L	Gas pipe		Liquid pipe
												ø	L	
PEFY-P15-18NMHU-E2	890 (35-1/2)	754 (29-11/16)	689 (26-33/16)	608 (23-5/8)	550 (21-11/16)	50 (2)	11 (19-11/16)	10	609 (24-3/8)	650 (25-9/16)	50 (2)	12.7 (1/2)	ø6.35 (1/4)	
PEFY-P24NMHU-E2	1065	1039	965	885	835	42.5	17	15	800 (31-1/2)	700 (27-9/16)	67 (2-11/16)	19	ø15.88 (5/8)	ø9.52 (3/8)
PEFY-P36-48-54NMHU-E2	1250	1204	1130	1050	1000	25	21	21	1000 (39-3/8)	900 (35-7/16)	50 (2)	19	ø15.88 (5/8)	ø9.52 (3/8)



for a greener tomorrow



Should this document be altered or changed without MIESCA's permission, it becomes null and void. MIESCA assumes no responsibility for any consequences in such cases.