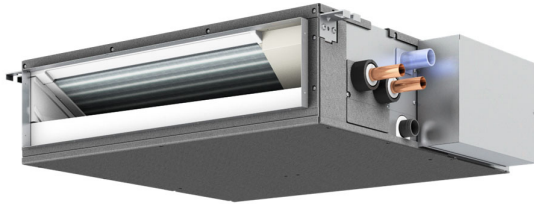


Job Name:		Location:	
Purchaser:		Submitted By:	
Submitted To:		Engineer:	
Date:		Application:	

Reference  Approval  Construction



Reference Image

**GENERAL FEATURE:**

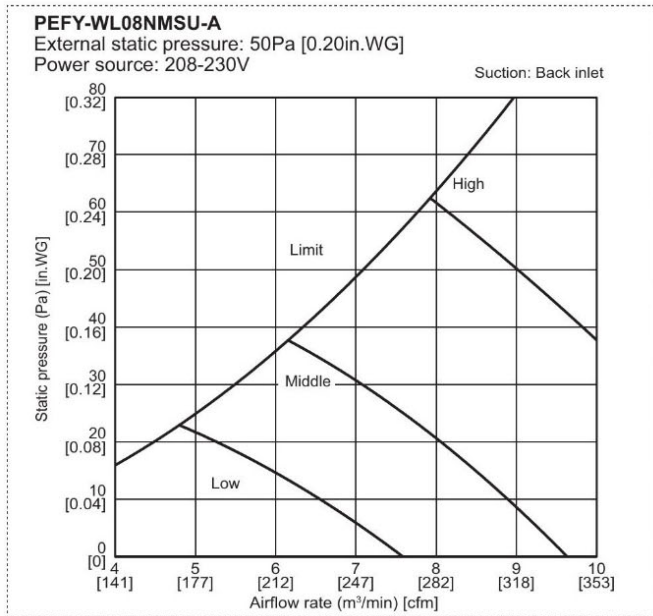
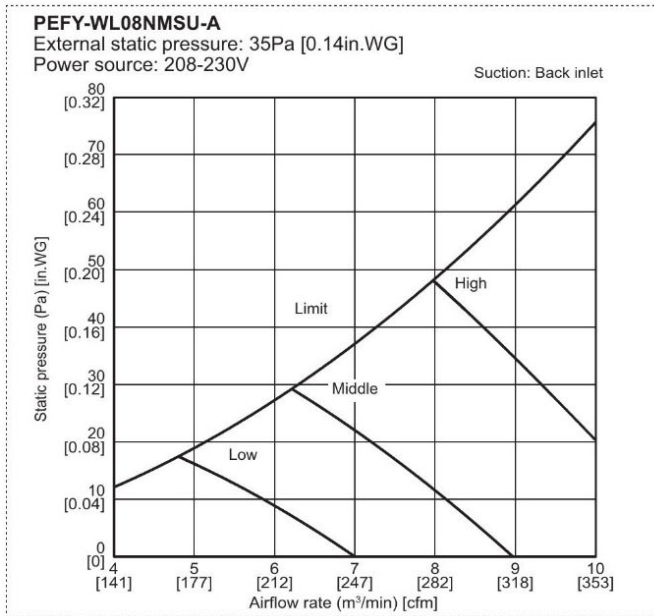
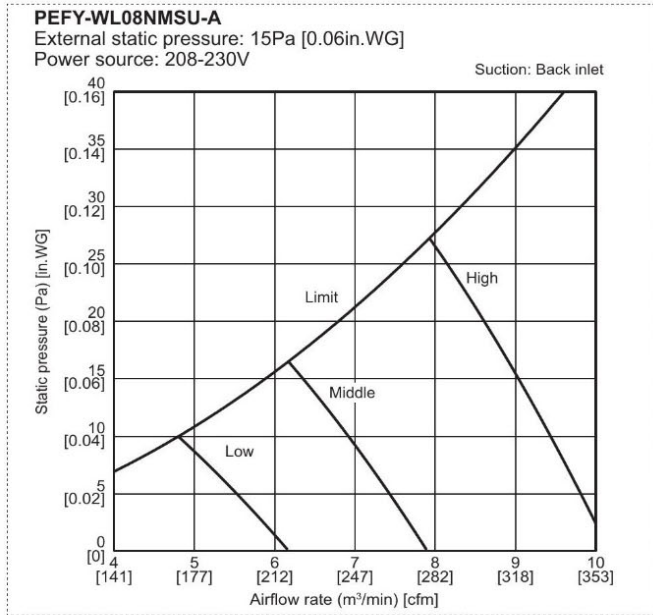
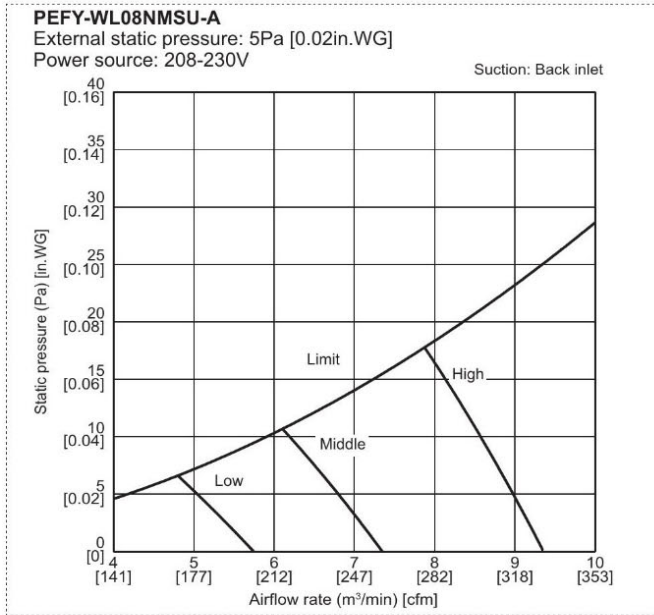
- Compatible with CityMulti Heat Recovery Outdoor Unit and Hybrid Branch Box
- HVRF Indoor Unit with hydronic coil
- A built-in condensate lift mechanism (pump)
- Dual set point

Model	PEFY-WL08NMSU-A
Power Source	1-phase 208/230 V, 60 Hz
Cooling Capacity Nominal (Btu/h)	8,000
Cooling Capacity Nominal (kW)	2.3
Cooling Power Input (kW)	0.044
Cooling Current Input (A, 208/230V)	0.49/0.44
Heating Capacity Nominal (Btu/h)	9,000
Heating Capacity Nominal (kW)	2.6
Heating Power Input (kW)	0.042
Heating Current Input (A)	0.44/0.39
Indoor Fan Motor FLA (A)	0.76
Minimum Circuit Ampacity (A)	0.95
External finish	Galvanized steel plate
External Dimensions (mm)	200 x 790 x 700
External Dimensions (in)	7-7/8 x 31-1/8 x 27-9/16
Net Weight (lb/kg)	42 (19)
Heat Exchanger	Cross fin (Aluminum fin and copper tube)
Water Volume (L)	0.7
Fan Type x Quantity	Sirocco fan x 2
Airflow, Low-Mid-High (cfm)	194 - 247 - 318
Airflow, Low-Mid-High (m³/min)	5.5 - 7.0 - 9.0
Airflow, Low-Mid-High (L/s)	92 - 117 - 150
Sound Pressure Level (dB<A>) - Low-Mid-High measured in anechoic room	23-26-30
Fan Motor Type	DC motor
Fan Motor Output (kW)	0.096
External Static Pressure (in. WG)	<0.02> - 0.06 - <0.14> - <0.20>
External Static Pressure (Pa)	<5> - 15 - <35> - <50>
Insulation material	Polystyrene foam, Polyethylene foam, Urethane foam
Air Filter	PP honeycomb fabric.
Water piping diameter Connection Size Inlet (mm O.D.)	22
Water piping diameter Connection Size Outlet (mm O.D.)	22
Water piping diameter Filled Pipe Size Inlet (mm I.D.)	20
Water piping diameter Filled Pipe Size Outlet (mm I.D.)	20
Field drain pipe size (inch/mm)	O.D.1-1/4 (32)
Optional External Heater Adapter	PAC-YU25HT

**Notes:**

- Nominal cooling conditions  
Indoor: 80°F D.B./67°F W.B. (26.7°C D.B./19.4°C W.B.),  
Outdoor: 95°F D.B. (35°C D.B.)  
Pipe length: 25 ft. (7.6 m), Level difference: 0 ft. (0 m)
- The values are measured at the factory setting of external static pressure.
- Nominal heating conditions  
Indoor: 70°F D.B. (21.1°C D.B.),  
Outdoor: 47°F D.B./43°F W.B. (8.3°C D.B./6.1°C W.B.)  
Pipe length: 25 ft. (7.6 m), Level difference: 0 ft. (0 m)
- The factory setting of external static pressure is shown without <>.
- Refer to 'Fan characteristics curves', according to the external static pressure, in DATA BOOK for the usable range of air flow rate.
- Be sure to install a valve on the water inlet/outlet.
- Install a strainer (40 mesh or more) on the pipe next to the valve to remove the foreign matters.
- The water circuit must be a closed circuit (water is not exposed to the atmosphere).
- All electrical work shall comply with Nation (CEC) and local codes and regulations
- Should this document be altered or changed without MESCA's permission, it becomes null and void. MESCA assumes no responsibility for any consequences in such cases.
- Mitsubishi Electric (MESCA) supports the use of only MESCA supplied and approved accessories. Use of non-MESCA supported accessories will affect warranty coverage.





Note: Operate only within the operating range shown in the above fan characteristic curves