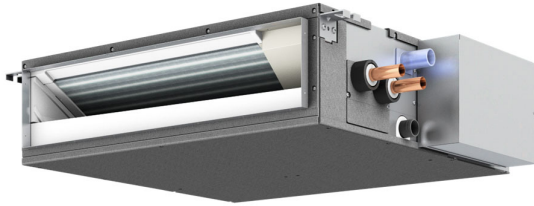


Job Name:		Location:	
Purchaser:		Submitted By:	
Submitted To:		Engineer:	
Date:		Application:	

Reference  Approval  Construction



Reference Image

Model	PEFY-WL15NMSU-A
Power Source	1-phase 208/230 V, 60 Hz
Cooling Capacity Nominal (Btu/h)	15,000
Cooling Capacity Nominal (kW)	4.4
Cooling Power Input (kW)	0.056
Cooling Current Input (A, 208/230V)	0.62/0.57
Heating Capacity Nominal (Btu/h)	17,000
Heating Capacity Nominal (kW)	5
Heating Power Input (kW)	0.054
Heating Current Input (A)	0.57/0.52
Indoor Fan Motor FLA (A)	0.96
Minimum Circuit Ampacity (A)	1.2
External finish	Galvanized steel plate
External Dimensions (mm)	200 x 990 x 700
External Dimensions (in)	7-7/8 x 39 x 27-9/16
Net Weight (lb/kg)	51 (23)
Heat Exchanger	Cross fin (Aluminum fin and copper tube)
Water Volume (L)	1.2
Fan Type x Quantity	Sirocco fan x 3
Airflow, Low-Mid-High (cfm)	282 - 353 - 424
Airflow, Low-Mid-High (m <sup>3</sup> /min)	8.0 - 10.0 - 12.0
Airflow, Low-Mid-High (L/s)	133 - 167 - 200
Sound Pressure Level (dB<A>) Low-Mid-High measured in anechoic room	29-31-34
Fan Motor Type	DC motor
Fan Motor Output (kW)	0.096
External Static Pressure (in. WG)	<0.02> - 0.06 - <0.14> - <0.20>
External Static Pressure (Pa)	<5> - 15 - <35> - <50>
Insulation material	Polystyrene foam, Polyethylene foam, Urethane foam
Air Filter	PP honeycomb fabric.
Water piping diameter Connection Size Inlet (mm O.D.)	22
Water piping diameter Connection Size Outlet (mm O.D.)	22
Water piping diameter Filled Pipe Size Inlet (mm I.D.)	20
Water piping diameter Filled Pipe Size Outlet (mm I.D.)	20
Field drain pipe size (inch/mm)	O.D.1-1/4 (32)
Optional External Heater Adapter	PAC-YU25HT

**GENERAL FEATURE:**

- Compatible with CityMulti Heat Recovery Outdoor Unit and Hybrid Branch Box
- HVRF Indoor Unit with hydronic coil
- A built-in condensate lift mechanism (pump)
- Dual set point

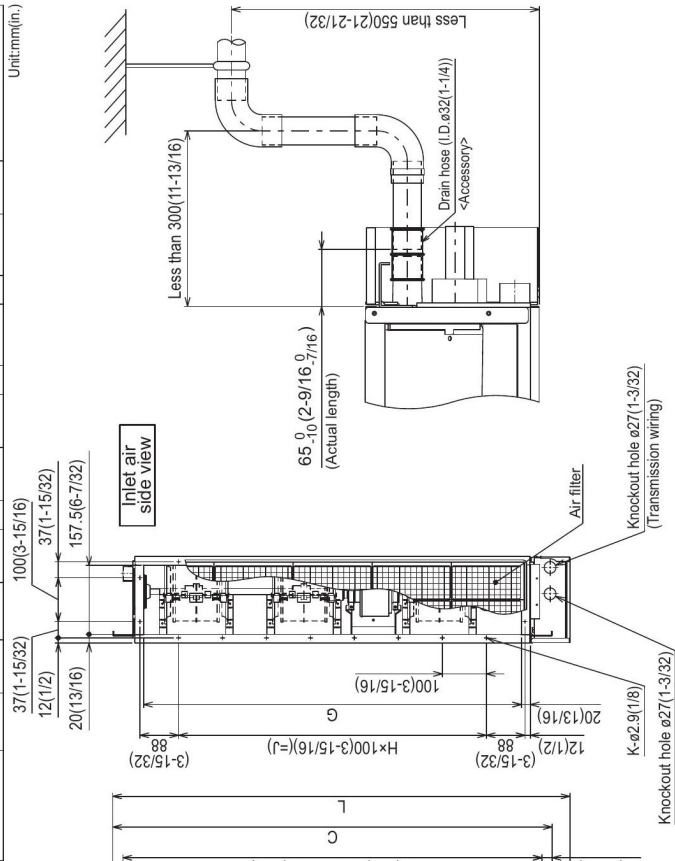
**Notes:**

1. Nominal cooling conditions  
Indoor: 80°F D.B./67°F W.B. (26.7°C D.B./19.4°C W.B.),  
Outdoor: 95°F D.B. (35°C D.B.)  
Pipe length: 25 ft. (7.6 m), Level difference: 0 ft. (0 m)
2. The values are measured at the factory setting of external static pressure.
3. Nominal heating conditions  
Indoor: 70°F D.B. (21.1°C D.B.),  
Outdoor: 47°F D.B./43°F W.B. (8.3°C D.B./6.1°C W.B.)  
Pipe length: 25 ft. (7.6 m), Level difference: 0 ft. (0 m)
4. The factory setting of external static pressure is shown without <>.
5. Refer to 'Fan characteristics curves', according to the external static pressure, in DATA BOOK for the usable range of air flow rate.
6. Be sure to install a valve on the water inlet/outlet.
7. Install a strainer (40 mesh or more) on the pipe next to the valve to remove the foreign matters.
8. The water circuit must be a closed circuit (water is not exposed to the atmosphere).
9. All electrical work shall comply with Nation (CEC) and local codes and regulations
10. Should this document be altered or changed without MESCA's permission, it becomes null and void. MESCA assumes no responsibility for any consequences in such cases.
11. Mitsubishi Electric (MESCA) supports the use of only MESCA supplied and approved accessories. Use of non-MESCA supported accessories will affect warranty coverage.

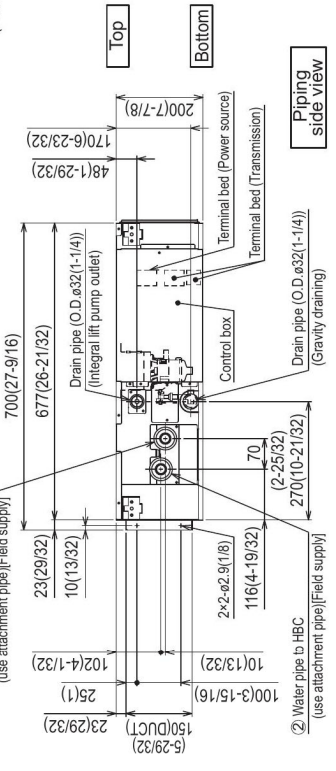
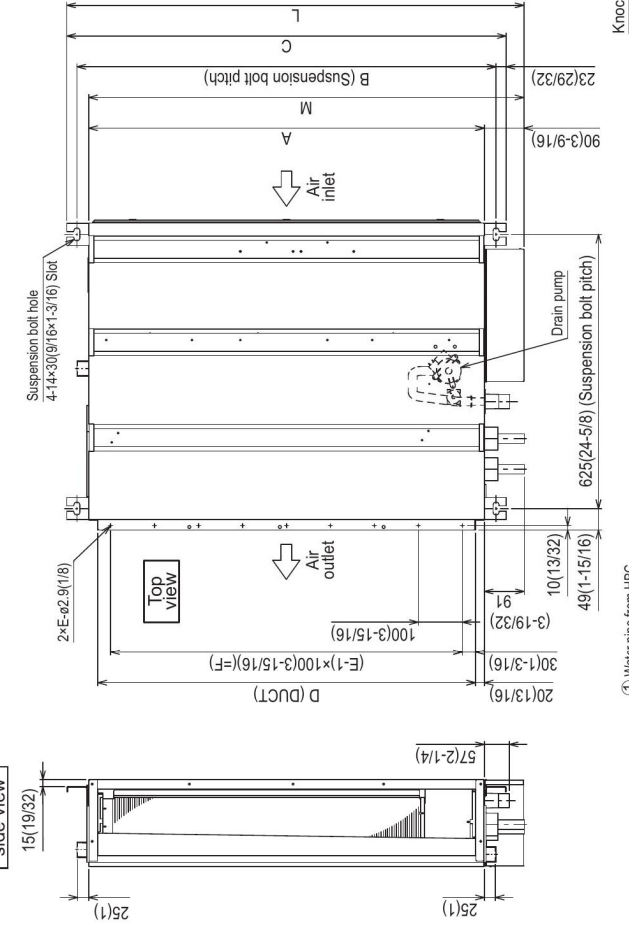
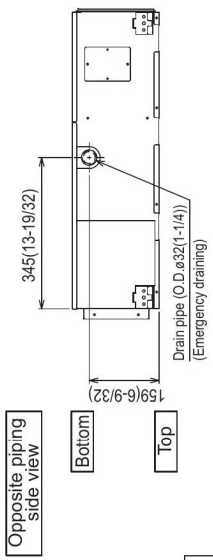
PEFY-WL04, 06, 08, 12, 15, 18NMSU-A

Unit:mm (in.)

Model	A	B	C	D	E	F	G	H	J	K	L	M	① Water pipe from HBC	② Water pipe to HBC
PEFY-WL15NMSU-A	700	752	798	660	600	660	660	500	500	16	839	790		
PEFY-WL06NMSU-A	600	652	698	560	500	560	560	400	400	16	739	690		
PEFY-WL08NMSU-A	500	552	598	460	400	460	460	300	300	16	639	590		
PEFY-WL12NMSU-A	400	452	498	360	300	360	360	200	200	16	539	490		
PEFY-WL18NMSU-A	300	352	398	260	200	260	260	100	100	16	439	390		



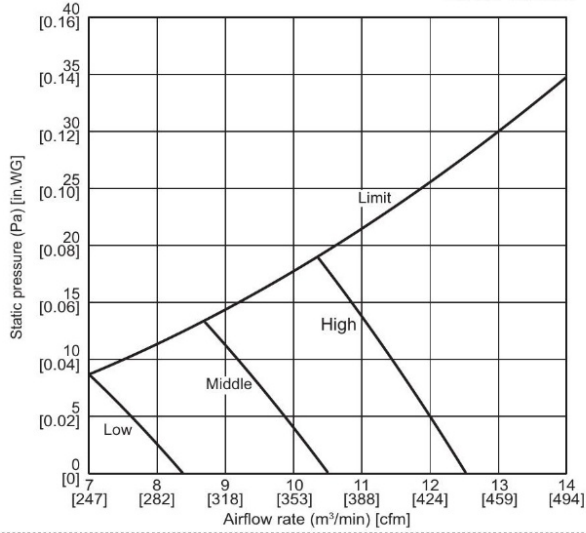
- Note 1. Use M10 screw for the suspension bolt (field supply).
- 2. This drawing is for PEFY-WL15 - 18NMSU-A models, which have 3 fans.
- 3. In case of the inlet duct is used, remove the air filter (supply with the unit), then install the filter (field supply) at suction side.



**PEFY-WL15NMSU-A**

External static pressure: 5Pa [0.02in.WG]  
Power source: 208-230V

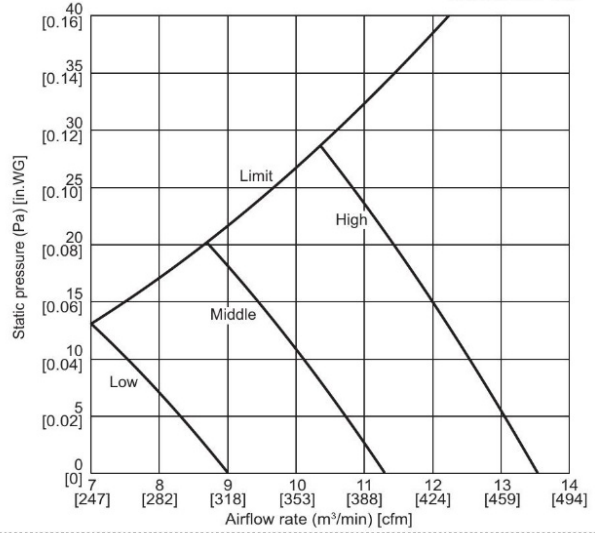
Suction: Back inlet



**PEFY-WL15NMSU-A**

External static pressure: 15Pa [0.06in.WG]  
Power source: 208-230V

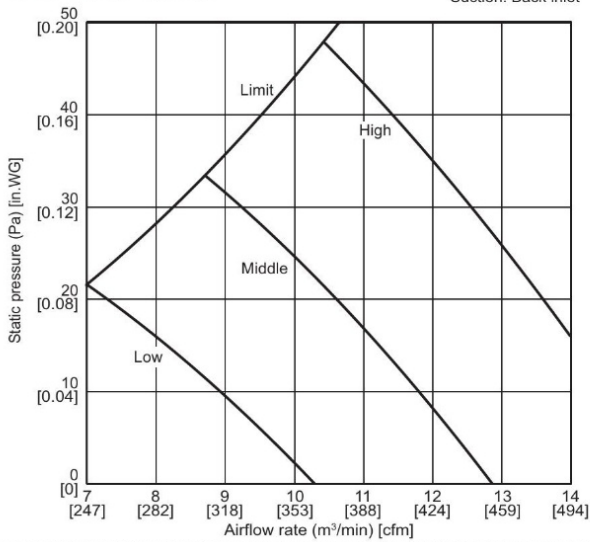
Suction: Back inlet



**PEFY-WL15NMSU-A**

External static pressure: 35Pa [0.14in.WG]  
Power source: 208-230V

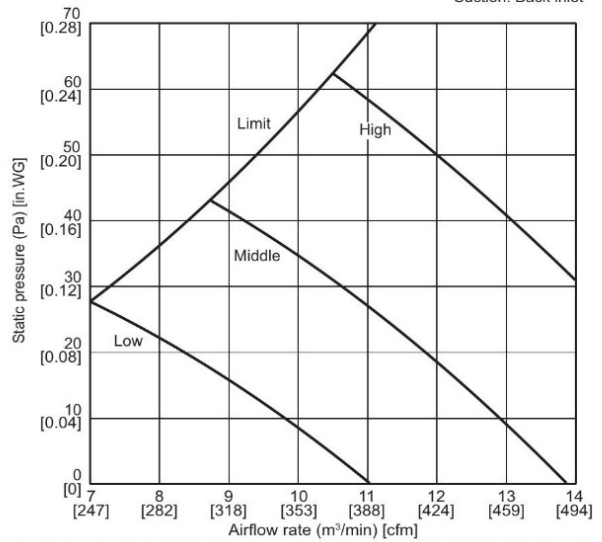
Suction: Back inlet



**PEFY-WL15NMSU-A**

External static pressure: 50Pa [0.20in.WG]  
Power source: 208-230V

Suction: Back inlet



Note: Operate only within the operating range shown in the above fan characteristic curves