

## Submission Data: PLA-A12EA8

### 12,000 BTU/H Ceiling-Cassette Indoor Unit for MXZ and PUMY Heat Pump System

Job Name:	Location:
Purchaser:	Submitted By:
Submitted To:	Reference:                      Approval:                      Construction:
Engineer:	Date:                                      Application:



Images provided for reference purposes only

#### Rated Capacity:

Cooling <sup>1</sup>	Btu/h	12,000
Heat at 47°F <sup>2</sup>	Btu/h	14,000

#### Indoor Unit Specifications:

Power Supply		208/230V, 1Ph, 60Hz
MCA	A	1.00
Blower Motor Full Load Amperage	A	0.28
Blower Motor Output	kW	0.05
Airflow (Low-Medium2-Medium1-High)	CFM	370 - 460 - 490 - 530
Airflow (Low-Medium2-Medium1-High)	m <sup>3</sup> /min	10.5 - 13 - 14 - 15
Sound Pressure Level	dB(A)	26 - 27 - 29 - 30
Drain Pipe Size	In. (mm)	1-1/4 (32)
External Finish Color (Panel)		White Munsell 1.0Y 9.2/0.2
Heat Exchanger		Plate fin coil
Dimension Unit (Panel)	W:mm[inch]	840 (950) [33-1/16 (37-13/32)]
	D:mm[inch]	840 (950) [33-1/16 (37-13/32)]
	H:mm[inch]	258(40)[10-3/16(1-9/16)]
Unit Weight	Lbs. (kg)	46 (21)
Gas Pipe Size O.D. (Flared)	In. (mm)	1/2 (12.7)
Liquid Pipe Size O.D. (Flared)	In. (mm)	1/4 (6.35)
Moisture Removal	pints/h	NA

#### Model No.                                      Description: (Optional Controls)

MELCO-RETAIL-MINI	Building Automated System DDC Interface
PAR-41MAAU	Wired Wall Mounted Remote Control
PAR-CT01MAU-SB	Touch Screen Wired Wall Mounted Control
PAC-YT53CRAU-J	Basic Wired Wall Mounted Control
RMF-CA200	Deluxe Thermostat Interface
MAC-334IF-E	System Control Interface
MAC-497IF-E	PAR Control Interface
MHK2	Wireless Wall Mounted Control

#### Model No.                                      Description: (Accessories)

PLP-41EAEU	Grille w/ i-see Sensor (Required Sold Separately)

AHRI Rated Conditions (Rated data is determined at a fixed compressor speed)

<sup>1</sup>Cooling (Indoor // Outdoor) 80°F (26.7°C) DB, 67°F (19.4°C) WB // 95°F (35°C) DB, 75°F (23.9°C) WB

<sup>2</sup>Heating at 47°F (8.3°C) (Indoor // Outdoor) 70°F (21.1°C) DB, 60°F (15.6°C) WB // 47°F (8.3°C) DB, 43°F (6.1°C) WB

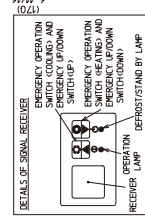
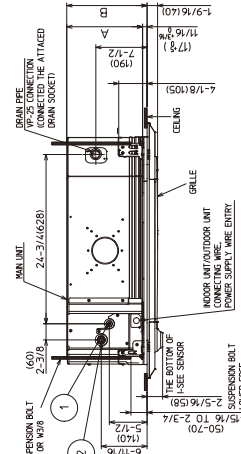
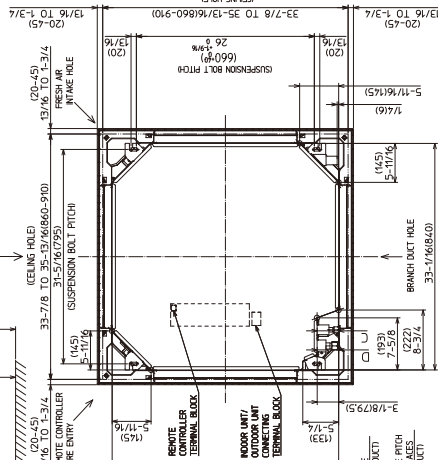
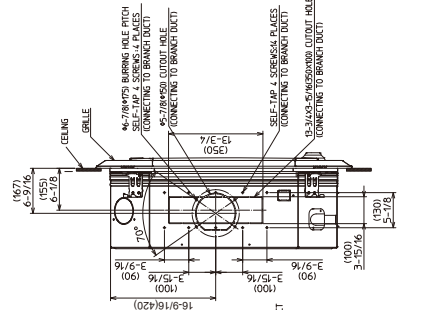
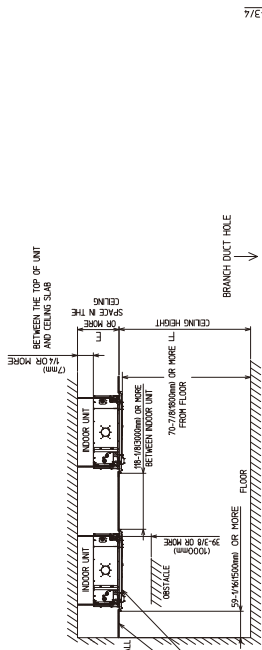
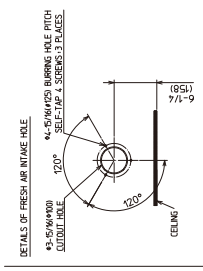
For data on specific Indoor units (all ducted, all non-ducted, and both ducted and non-ducted) combinations, see MXZ Technical and Service Manuals. Applications should be restricted to comfort cooling only; equipment cooling applications are not recommended for low ambient temperature conditions.

**Note:**

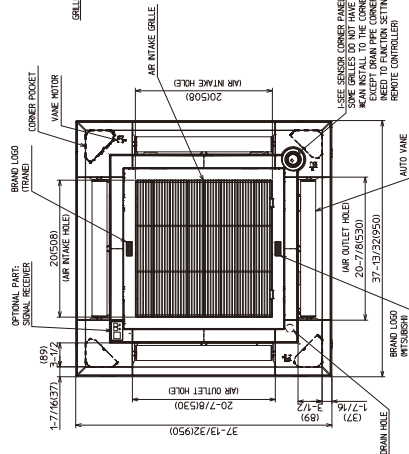
1. Mitsubishi Electric Sales Canada Inc. (MESCA) supports the use of only MESCA supplied and approved components and accessories for proper functioning of the unit(s). Use of non - MESCA supported components and accessories will affect warranty coverage. MESCA recommends (A) consideration of all applicable design and application parameters and requirements specific to any project.
2. Should any person change this document in any manner whatsoever without MESCA's written permission, the document shall be of no force and effect and any change shall be deemed to be a representation and warranty made by that person and not MESCA. That person, and not MESCA, shall assume full responsibility for the consequences of such changes. MESCA assumes no responsibility for any consequences in such cases.

**Indoor Unit Outline and Dimensions:**

Unit: inch (mm)



NOTE: CHOOSE THE GRILLE AMONG THE DEDICATED GRILLES FOR THE SUSPENSION BOLT USE: M10 OR M8. 4 FOR DRAIN PIPE USE: 1/2\"/>



MODELS	①	A	B	C	D	E	F
REFRIGERANT PRE-FILLER FLARED CONNECTION (1/2\"/>							
REFRIGERANT PRE-FILLER FLARED CONNECTION (3/8\"/>							
REFRIGERANT PRE-FILLER FLARED CONNECTION (1/2\"/>							

