

Job Name:

Schedule Reference:

Date:

**GENERAL FEATURES**

- Dual set point functionality (\*2)
- New 3D i-see sensor built-in (\*2)
- New stylish and square design - easier to install
- New Draft Save Mode
- Lightweight, low-profile compact design
- Customizable wide airflow pattern with adjustable vane control through unit controller
- Auto wave airflow in heating mode - independent cycling of horizontal and vertical vane positions for even heat distribution
- Built-in condensate lift mechanism; lifts to 33-1/2 in.
- Ventilation air intake supported
- Four-speed
- Auto fan
- IT Terminal plug

**ACCESSORIES:**

Grille..... (Required ordered separately) ..... PLP-41EAEU  
 External Heating Adapter ..... PAC-YU25HT  
 Multi-function casement ..... PAC-SJ41TM-E  
 Fresh-air intake Duct Flange ..... PAC-SH65OF-E  
 High efficiency filterelement (MERV 10) ..... PAC-SH59KF-E  
 Simple Remote Controller ..... PAC-YT53CRAU  
 Smart ME Controller ..... PAR-U01MEDU  
 Wireless Remote Controller ..... PAR-FL32MA  
 Wired MA Remote Controller (\*4) ..... PAR-40MAA  
 Wireless Receiver ..... PAR-SR4LU-E

Model			PLFY-EP30NEMU-E	
Power source			1-phase 208-230 V 60Hz	
Cooling capacity *1	BTU/h	30,000		
		*1	kW	8.8
	Power input		kW	0.04
	Current input		A	0.45
Heating capacity *2	BTU/h	34,000		
		*2	kW	10
	Power input		kW	0.04
	Current input		A	0.4
Minimum Circuit Ampacity *		A	0.57	
External finish			Galvanized steel sheet	
External dimension H × W × D		inch	11-3/4 × 33-3/32 × 33-3/32	
		mm	298 × 840 × 840	
Net weight		lbs (kg)	55 (25)	
Decoration panel	Model		PLP-41EAEU	
	External finish		MUNSELL (1.0Y 9.2/0.2)	
	Dimension	in.	1-9/16 × 37-13/32 × 37-13/32	
		mm	40 × 950 × 950	
	H × W × D		40 × 950 × 950	
Net weight		lbs (kg)	11 (5)	
Heat exchanger			Cross fin	
FAN	Type × Quantity		Turbo fan × 1	
	External static press.	in.WG	0.000 (208V)	
		Pa	0	
		in.WG	0.000 (230V)	
		Pa	0	
	Motor Type		DC motor	
	Motor output		kW	0.12
	Driving mechanism		Direct-driven	
	Air flow rate		(Low-Mid2-Mid1-High)	
			cfm	636 - 706 - 777 - 812
		m³/min	18 - 20 - 22 - 23	
Sound pressure level (measured in anechoic room)			(Low-Mid2-Mid1-High)	
		dB <A>	28 - 31 - 33 - 35	
Insulation material			PS	
Air filter			PP honeycomb (long life filter, anti-bacterial type)	
Protection device			Fuse	
Refrigerant control device			LEV	
Connectable outdoor unit			R410A CITY MULTI	
Refrigerant piping	Liquid (R410A)	inch (mm)	3/8 (9.52) Flare	
diameter	Gas (R410A)	inch (mm)	5/8 (15.88) Flare	
Field drain pipe size		inch (mm)	O.D. 1-1/4(32)	

**NOTE:**

1. Mitsubishi Electric Sales Canada Inc. (MESCA) supports the use of only MESCA supplied and approved components and accessories for proper functioning of the unit(s). Use of non - MESCA supported components and accessories will affect warranty coverage. MESCA recommends (A) consideration of all applicable design and application parameters and requirements specific to any project; and

(B) implementation of any countermeasures needed to address those parameters and requirements, wherever applicable.

\*2. All components of the system must be compatible. For more details on system control compatibility, please refer to Technical Bulletin 100-151 available on our website.

NOTE: Items denoted in this submittal by an asterisk (\*) are provided as specific instances or examples of system compatibility, and are not intended to represent a complete or exhaustive list of compatibility requirements.

3. Should any person change this document in any manner whatsoever without MESCA's written permission, the document shall be of no force and effect and any change shall be deemed to be a representation and warranty made by that person and not MESCA. That person, and not MESCA, shall assume full responsibility for the consequences of such changes. MESCA assumes no responsibility for any consequences in such cases.

\*4. Unit comes standard with built-in 3D i-see sensor. 3D i-see sensor functions only available with PAR-40MAA wired remote controller.

**Notes:**

\*1 Nominal cooling conditions

Indoor: 80degF D.B. / 67degF W.B.

(26.7degC D.B. / 19.4degC W.B.)

Outdoor: 95degF D.B.

(35degC D.B.)

Pipe length: 25 ft. (7.6 m)

Level difference: 0 ft. (0 m)

\*2 Nominal heating conditions

70degF D.B.

(21.1degC D.B.)

47degF D.B. / 43degF W.B.

(8.3degC D.B. / 6.1degC W.B.)

25 ft. (7.6 m)

0 ft. (0 m)

**Note:**

Ventilation air to be introduced independent of or in series with VRF indoor units.

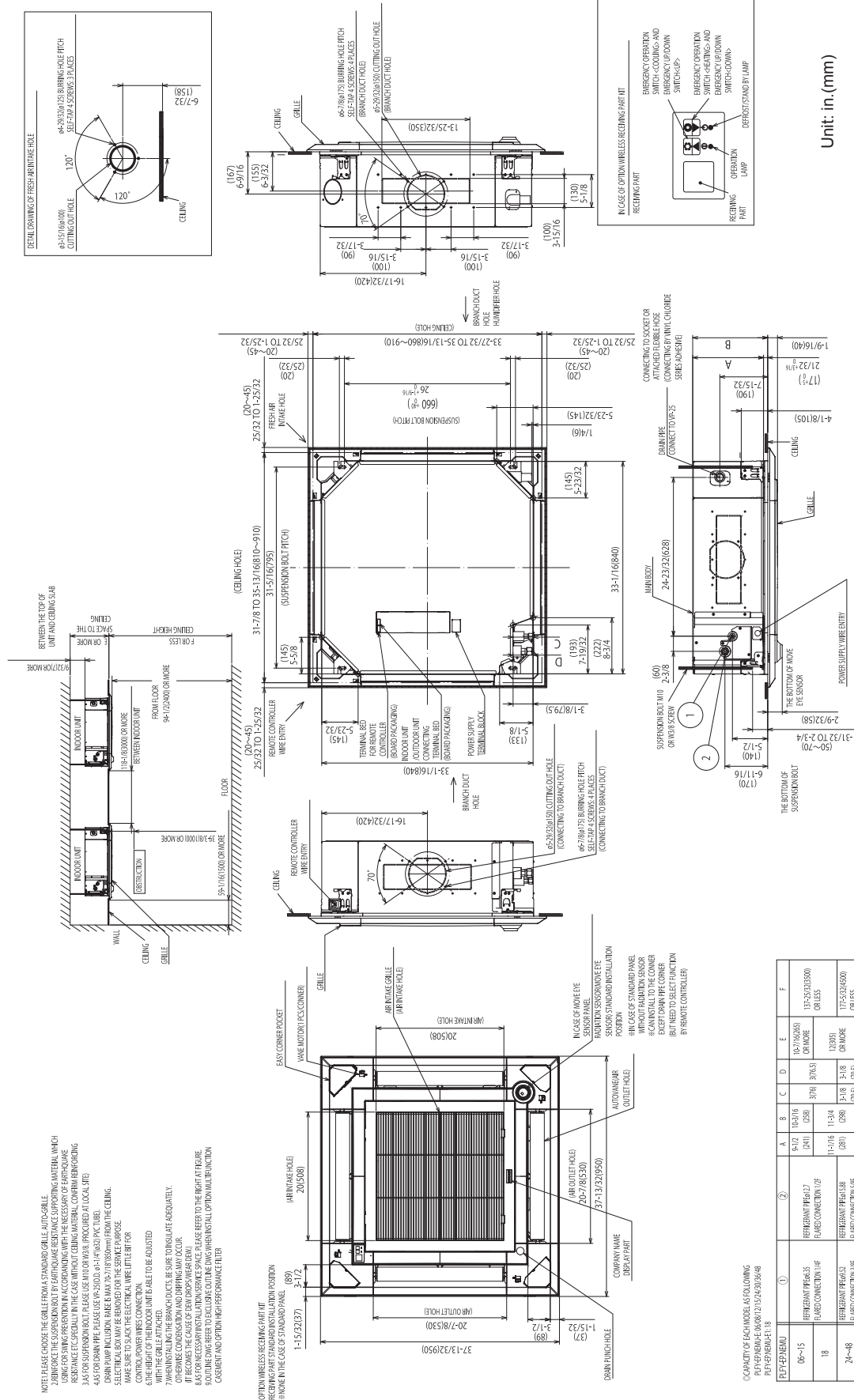
Please refer to local codes for the required ventilation rates specific to the application.

Notes:

Specifications are subject to change without notice.

\*All electrical work shall comply with National (CEC) and local codes and regulations.

Form # SB\_PLFY-EP30NEMU-ER1-T\_202008  
Specifications are subject to change without notice.  
[www.MitsubishiElectric.ca](http://www.MitsubishiElectric.ca)  
© 2020 Mitsubishi Electric Sales Canada Inc.



Should this document be altered or changed without MESCA's permission, it becomes null and void. MESCA assumes no responsibility for any consequences in such cases.