

Job Name:

Schedule Reference:

Date:



UNIT OPTION

Standard Model PUHY-EP432TSNU-A1

Seacoast (BS) Model PUHY-EP432TSNU-A1-BS

Minimum Operating Temperature
Heating (Outdoor): -25°F (-32°C) WB

Below -22°F (-30°C) WB, an auxiliary heating source is highly recommended.

ACCESSORIES

Snow/Wind Guards - (See separate submittal)

Panel Heater - (PAC-PH02EHYU-E) (x3)

Note: Mitsubishi Electric (MESCA) supports the use of only MESCA supplied and approved Snow Guard / Wind Deflectors / Windscreens and accessories for proper functioning of the unit(s). Use of non-MESCA supported Snow Guard / Wind Deflectors / Windscreens and accessories will affect warranty coverage.

Outdoor Model		PUHY-EP432TSNU-A1 (-BS)	
Indoor Model		Non-Ducted	Ducted
Power source		3-phase 3-wire 208-230 V ±10% 60 Hz	
Cooling capacity *1 (Nominal)	BTU/h	432,000	
	kW	126.6	
(208-230)	Power input	37.39	
	Current input	115.3-104.2	
(Rated)	BTU/h	410,000	
	kW	120.2	
(208-230)	Power input	44.00	40.19
	Current input	135.7-122.7	123.9-112.0
Temp. range of cooling	Indoor	W.B.	59-75°F (15-24°C)
	Outdoor	D.B.	23-126°F (-5-52°C)
Heating capacity *2 (Nominal)	BTU/h	480,000	
	kW	140.7	
(208-230)	Power input	40.45	
	Current input	124.7-112.8	
(Rated)	BTU/h	455,000	
	kW	133.4	
(208-230)	Power input	38.29	36.46
	Current input	118.0-106.7	112.4-101.6
Temp. range of heating	Indoor	D.B.	59-81°F (15-27°C)
	Outdoor	W.B.	-13-60°F (-25-15.5°C)
Indoor unit connectable	Total capacity	50-130% of outdoor unit capacity	
	Model/Quantity	P04-P96/3-50	
Sound power level (measured in anechoic room) *3		dB <A> 89.0/88.5	
Refrigerant piping diameter	Liquid pipe	in. (mm)	3/4 (19.05) Braze
	Gas pipe	in. (mm)	1-5/8 (41.28) Braze

Set Model

Model		PUHY-EP144TNU-A1 (-BS)	PUHY-EP144TNU-A1 (-BS)	PUHY-EP144TNU-A1 (-BS)
Minimum Circuit Ampacity (*)	A	60-60	60-60	60-60
Maximum Overcurrent Protection (*)	A	100-100	100-100	100-100
FAN	Type x Quantity	Propeller fan x 2		
	Airflow rate	cfm	9,200	9,200
		m3/min	260	260
	Control, Driving mechanism	Inverter-control, Brushless DC motor		
	Motor output	kW	0.46+0.46	0.46+0.46
	*4 External static press.		0 in.WG (0 Pa)	0 in.WG (0 Pa)
Compressor	Type x Quantity	Inverter scroll hermetic compressor x 1		
	Starting method	Inverter		
	Motor output	kW	9.3 x 1	9.3 x 1
	Case heater	kW	0.045	0.045
	Lubricant		MEL32	MEL32
External finish		Pre-coated galvanized steel sheet (+powder coating for -BS type) <MUNSELL 3Y 7.8/1.1 or similar>	Pre-coated galvanized steel sheet (+powder coating for -BS type) <MUNSELL 3Y 7.8/1.1 or similar>	Pre-coated galvanized steel sheet (+powder coating for -BS type) <MUNSELL 3Y 7.8/1.1 or similar>
	External dimension H x W x D	in.	71-5/8 x 48-7/8 x 29-3/16	71-5/8 x 48-7/8 x 29-3/16
	mm	1,818 x 1,240 x 740	1,818 x 1,240 x 740	1,818 x 1,240 x 740
Protection devices	High pressure protection	High pressure sensor, High pressure switch at 4.15 MPa (601 psi)		
	Inverter circuit (COMP./FAN)	Over-current protection		
	Fan motor	-		
Refrigerant	Type x original charge	R410A x 23 lbs + 12 oz (10.8 kg)		
	Control	LEV and HIC circuit		
Net weight	lbs (kg)	680 (308)	680 (308)	680 (308)
Heat exchanger		Salt-resistant cross fin & aluminium tube		
HIC circuit (HIC: Heat Inter-Changer)		Copper pipe, tube-in-tube structure		
Pipe between unit and distributor	Liquid pipe	in. (mm)	1/2 (12.7) Braze	1/2 (12.7) Braze
	Gas pipe	in. (mm)	1-1/8 (28.58) Braze	1-1/8 (28.58) Braze
Defrosting method		Auto-defrost mode (Reversed refrigerant cycle)		
Optional parts		Outdoor Twinning kit: CMY-Y300CBK2		
		Joint: CMY-Y102SS/102LS-G2, CMY-Y202S/302S-G2 Header: CMY-Y104/108/1010C-G		

Notes:

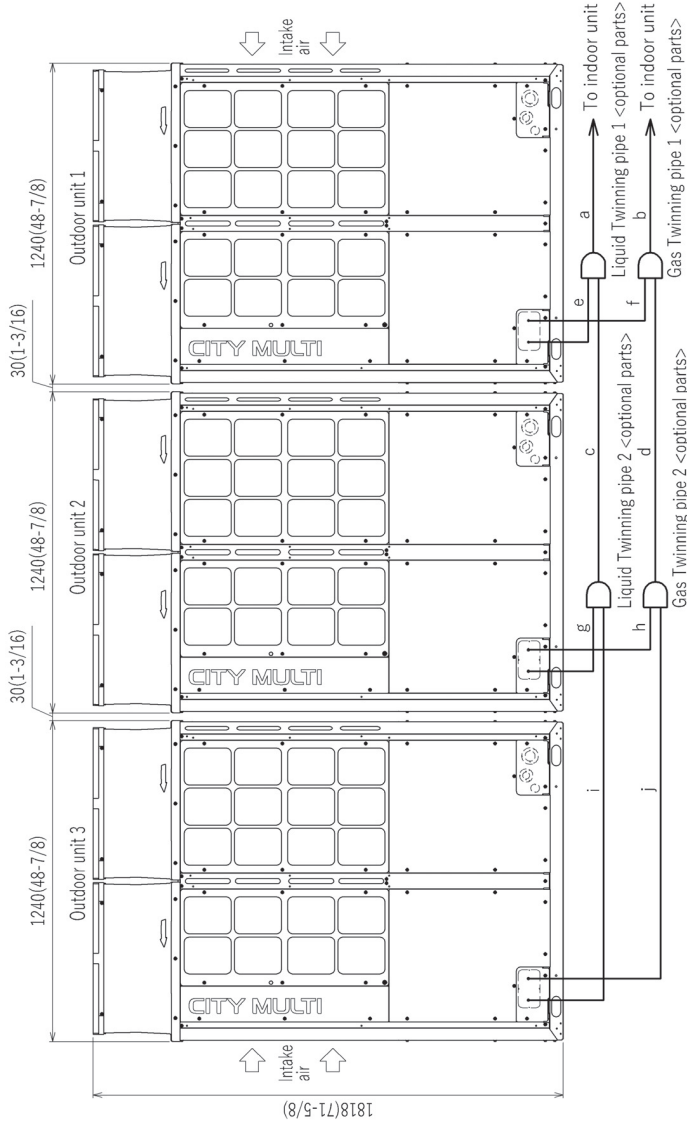
- Cooling conditions (Test conditions are based on AHRI 1230)
Indoor: 80°F DB/67°F WB, (26.7°C DB/19.4°C WB), Outdoor: 95°F DB, (35°C DB)
- Heating conditions (Test conditions are based on AHRI 1230)
Indoor: 70°F DB, (21.1°C DB), Outdoor: 47°F DB/43°F WB, (8.3°C DB/6.1°C WB)
- Cooling mode/heating mode
- External static pressure option is available (0.12 in. WG, 0.24 in. WG, 0.32 in. WG/30 Pa, 60 Pa, 80 Pa).

Specifications are subject to change without notice.

* All electrical work shall comply with National (CEC) and local codes and regulations. Should this document be altered or changed without MESCA's permission, it becomes null and void. MESCA assumes no responsibility for any consequences in such cases.

Module: PUHY-EP432TSNU-A1(-BS) - DIMENSIONS

Unit: mm (in.)



Twinning pipe connection size

Package unit name	(E)P336T/YSNU	(E)P360T/YSNU	(E)P384T/YSNU	(E)P408T/YSNU	(E)P432T/YSNU
Outdoor unit 1	(E)P120T/YNU	(E)P120T/YNU	(E)P144T/YNU	(E)P144T/YNU	(E)P144T/YNU
Outdoor unit 2	(E)P120T/YNU	(E)P120T/YNU	(E)P120T/YNU	(E)P144T/YNU	(E)P144T/YNU
Outdoor unit 3	(E)P96T/YNU	(E)P120T/YNU	(E)P120T/YNU	(E)P120T/YNU	(E)P144T/YNU
Outdoor Twinning Kit(optional parts)	CMY-Y300CBK2	CMY-Y300CBK2	CMY-Y300CBK2	CMY-Y300CBK2	CMY-Y300CBK2
Indoor unit					
~Twinning pipe 1	φ 19.05(3/4)	φ 19.05(3/4)	φ 19.05(3/4)	φ 19.05(3/4)	φ 19.05(3/4)
Gas	φ 41.28(1-5/8)	φ 41.28(1-5/8)	φ 41.28(1-5/8)	φ 41.28(1-5/8)	φ 41.28(1-5/8)
Liquid	φ 19.05(3/4)	φ 19.05(3/4)	φ 19.05(3/4)	φ 19.05(3/4)	φ 19.05(3/4)
~Twinning pipe 2	φ 34.93(1-3/8)	φ 34.93(1-3/8)	φ 34.93(1-3/8)	φ 34.93(1-3/8)	φ 34.93(1-3/8)
Gas	φ 12.7(1/2)	φ 12.7(1/2)	φ 12.7(1/2)	φ 12.7(1/2)	φ 12.7(1/2)
Liquid	φ 28.58(1-1/8)	φ 28.58(1-1/8)	φ 28.58(1-1/8)	φ 28.58(1-1/8)	φ 28.58(1-1/8)
~Outdoor unit 1	φ 12.7(1/2)	φ 12.7(1/2)	φ 12.7(1/2)	φ 12.7(1/2)	φ 12.7(1/2)
Gas	φ 28.58(1-1/8)	φ 28.58(1-1/8)	φ 28.58(1-1/8)	φ 28.58(1-1/8)	φ 28.58(1-1/8)
Liquid	φ 9.52(3/8)	φ 12.7(1/2)	φ 12.7(1/2)	φ 12.7(1/2)	φ 12.7(1/2)
~Outdoor unit 2	φ 22.2(7/8)	φ 28.58(1-1/8)	φ 28.58(1-1/8)	φ 28.58(1-1/8)	φ 28.58(1-1/8)
Gas					
~Outdoor unit 3					
Gas					

- Note 1. Connect the pipes as shown in the figure above. Refer to the table above for the pipe size.
 2. Twinning pipes must be installed horizontally using a level vessel.
 Be sure to see the Installation Manual for details of Twinning pipe installation.
 3. The pipe section before the Twinning pipe (section "a", "b", "c" and "d" in the figure) must have at least 500mm(19-11/16) of straight section (* including the straight pipe that is supplied with the Twinning pipe).
 4. Only use the Twinning pipe by Mitsubishi (optional parts).

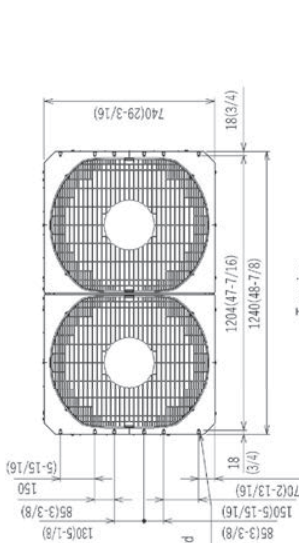
Module: PUHY-EP144TNU-A1(-BS) - DIMENSIONS

Unit: mm (in.)

Connecting pipe specifications

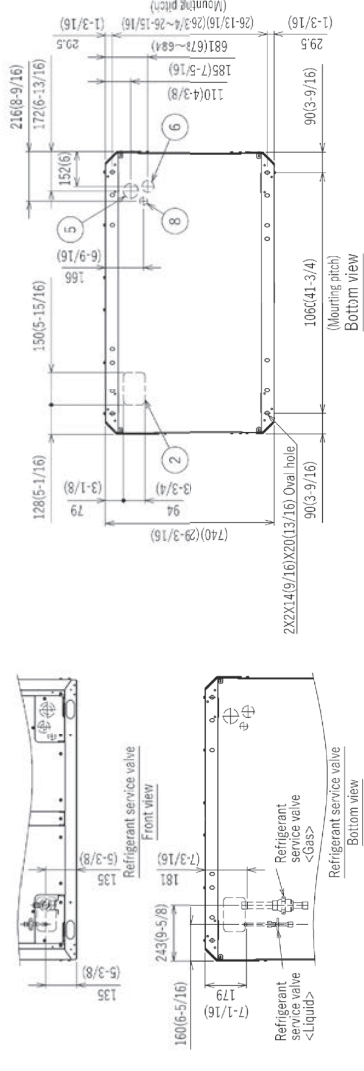
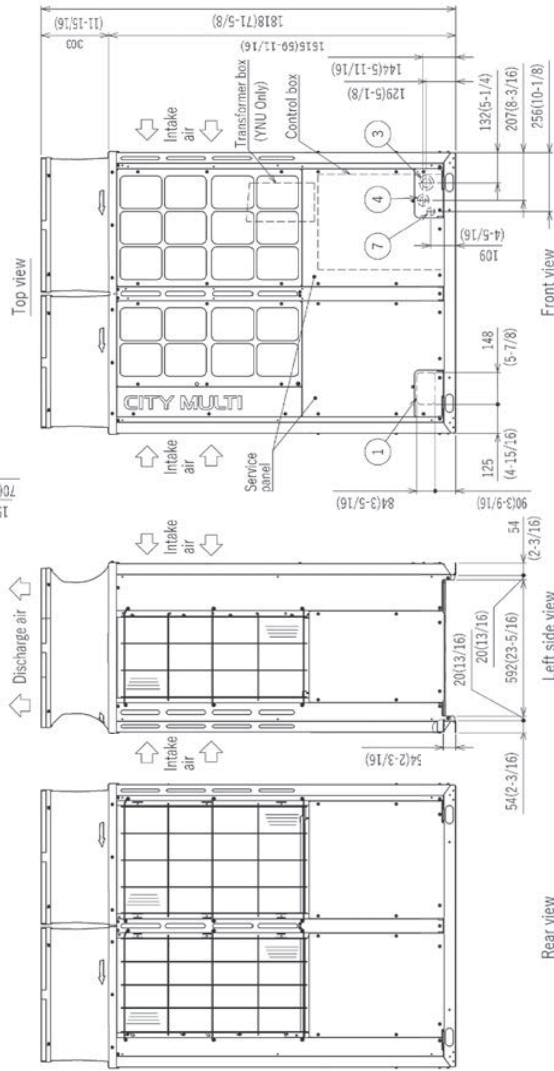
Model	Diameter				
	Refrigerant pipe *1		Service valve		
	Liquid	Gas	L liquid	Gas	
(E)P96	φ 9.52(3/8)	Brazed	φ 22.2(7/8)	Brazed	φ 12.7(1/2)
(E)P96	φ 12.7(1/2)	Brazed *3	φ 22.2(7/8)	Brazed	φ 28.58(1-1/8)
(E)P120	φ 9.52(3/8)	Brazed	φ 28.58(1-1/8)	Brazed	φ 12.7(1/2)
(E)P120	φ 12.7(1/2)	Brazed *4	φ 28.58(1-1/8)	Brazed	φ 28.58(1-1/8)
(E)P144	φ 12.7(1/2)	Brazed	φ 28.58(1-1/8)	Brazed	φ 12.7(1/2)
(E)P144	φ 12.7(1/2)	Brazed	φ 28.58(1-1/8)	Brazed	φ 28.58(1-1/8)

- *1 Connect the refrigerant pipe to the service valve according to the Installation Manual.
- *2 Indicates dimensions and connection specifications in the case the unit is used in combination with other outdoor units.
- *3 Furthest piping length (OU from IU) ≅ 90m (295ft)
- *4 Furthest piping length (OU from IU) ≅ 40m (131ft)



Note 1. Please refer to (2/2) for information regarding necessary spacing around the unit and foundation work.
 2. At brazing of pipes, wrap the refrigerant service valve with wet cloth and keep the temperature of refrigerant service valve under 120°C(248°F).

2X6X4-6(3/16) Hole
 (Make hole at the plastic fan guard for snow hood attachment)
 <Snow hood attachment hole>



NO.	Usage	Specifications
①	Front through hole	148(5-7/8) X 84(3-5/16) Knockout hole
②	Bottom through hole	150(5-15/16) X 94(3-3/4) Knockout hole
③	Front through hole	φ 62.7(2-1/2) or φ 34.5(1-3/8) Knockout hole
④	Front through hole	φ 43.7(1-3/4) or φ 22.2(7/8) Knockout hole
⑤	Bottom through hole	φ 65(2-9/16) Knockout hole
⑥	Bottom through hole	φ 52(2-1/16) Knockout hole
⑦	For transmission cables	φ 34(1-3/8) Knockout hole
⑧	Bottom through hole	φ 34(1-3/8) Knockout hole

Should this document be altered or changed without MESCA's permission, it becomes null and void. MESCA assumes no responsibility for any consequences in such cases.