

Submission Data: PUMY-HP36NKMU2

Air Source Heat Pump System

| | |
|---------------|--|
| Job Name: | Location: |
| Purchaser: | Submitted By: |
| Submitted To: | Reference: Approval: Construction: |
| Engineer: | Date: Application: |



Images provided for reference purposes only

- Single-phase Outdoor unit with variable refrigerant flow (VRF) zoning technology
- Inverter-driven variable speed compressor
- Uses CITY MULTI indoor units and Control Network
- Compatible with M&P series Indoor Units with Branch Box
- Base pan heater included

Performance:

| | | | | |
|--|---|--|--|-------------|
| Power supply | | 1-phase 208/230 V, 60 Hz | | |
| Indoor type | | Non-Ducted | Mixed | Ducted |
| Cooling | Capacity Rated ¹ | Btu/h | 36,000 | 36,000 |
| | Rated power consumption ¹ | W | 2,400 | 3,000 |
| | Current input (208/230V) | A | 11.7/10.6 | 13.0/11.8 |
| Heating | Capacity Rated 47°F ¹ | Btu/h | 42,000 | 42,000 |
| | Capacity Max. 17°F ² | Btu/h | 42,000 | 42,000 |
| | Capacity Max. 5°F | Btu/h | 38,500 | 38,500 |
| | Rated power consumption 47°F ¹ | W | 3,080 | 3,285 |
| | Current input (208/230V) | A | 15.0/13.6 | 16.0/14.5 |
| Breaker size | | 40 A - When power is supplied separately 45 A - When power is supplied from the outdoor unit | | |
| Minimum wire size | | 8.4(8AWG) - When power is supplied separately 13.3(6AWG) - When power is supplied from the outdoor unit | | |
| Indoor unit connectable | Total capacity | 50 to 130% of outdoor unit capacity | | |
| | Model/Quantity ³ | CITY MULTI | 04 - 36/11 | |
| | | Branch box | 06 - 36/4 | |
| Sound pressure level (measured in anechoic room) | | dB <A> | 49/53 | |
| Refrigerant piping diameter | Liquid pipe | inch (mm) | 3/8 (ø9.52) | |
| | Gas pipe | inch (mm) | 5/8 (ø15.88) | |
| Fan | Type x Quantity | | Propeller fan x 2 | |
| | Airflow rate | m ³ /min | 110 | |
| | | cfm | 3,885 | |
| | Control, Driving mechanism | | DC control | |
| | Motor output | kW | 0.074 x 2 | |
| Compressor | Type x Quantity | | Scroll hermetic compressor x 1 | |
| | Manufacture | | Mitsubishi Electric Corporation | |
| | Starting method | | Inverter | |
| | Motor output | kW | 2.8 | |
| | Lubricant | | FV50S 78oz. (2.3L) | |
| External finish | | Galvanized Steel Sheet <Munsell 3Y 7.8/ 1.1> | | |
| External dimension HxWxD | | mm | 1,338 x 1,050 x 330 (+25) | |
| | | inch | 52-11/16 x 41-11/32 x 13 (+1) | |
| Protection devices | High pressure protection | | High pressure switch | |
| | Inverter circuit (COMP./FAN) | | Overcurrent detection, Overheat detection (Heat sink thermistor) | |
| | Compressor protection | | Compressor thermo, Overcurrent detection | |
| | Fan motor protection | | Overheating/Voltage protection | |
| Refrigerant | Type x original charge | | R410A 10 lbs. 9 oz. (4.8kg) | |
| | Control | | Linear Expansion Valve | |
| Net weight | | lb (kg) | 278 (126) | |
| Heat exchanger | | Cross fin and tube | | |
| HIC circuit (HIC: Heat Inter-Changer) | | HIC circuit | | |
| Operating Temperature Range | (Cooling) | D.B 23 to 115°F [D.B.-5 to 46°C] ^{4, 5, 6} | | |
| | (Heating) | D.B.-13 to 70°F [D.B. -25 to 21°C] | | |
| AHRI Ratings | EER2 | 15 | 13.5 | 12 |
| | SEER2 | 23 | 20.75 | 18.5 |
| Non-Ducted/ Mixed/ Ducted | HSPF2 (Region IV / V) | 12.0 / 10.65 | 11.5 / 10.2 | 11.0 / 9.80 |

NOTES:

¹ Rating conditions Cooling Indoor : D.B. 80°F/W.B. 67 °F [D.B.26.7°C/W.B. 19.4°C]
Outdoor : D.B. 95°F [D.B. 35.0°C]

Heating Indoor : D.B. 70°F [D.B. 21.1°C]
Outdoor : D.B. 47°F/W.B. 43°F [D.B. 8.3°C/W.B. 6.1°C]

² Conditions Heating Indoor : D.B. 70°F [D.B. 21.1°C]
Outdoor : D.B. 17°F/W.B. 15°F [D.B. -8.3°C/W.B. -9.4°C]

³ It cannot be connected mixed CITY MULTI indoor unit and branch box indoor unit.

⁴ D.B. 5 to 115°F [D.B. -15 to 46°C], when an optional Air Outlet Guide is installed.

However, this condition does not apply to the indoor units listed in #5.

⁵ 50 to 115°F (10 to 46°C) D.B.: When connecting PKFY-P04/06/08/12NLMU, PFFY-P06/08/12NEMU, and PFFY-P06/08/12NRMU type indoor unit.

⁶ When the temperature is below D.B. 50°F [D.B. 10°C] with branch box system, noise could potentially occur.

Note: Refer to the indoor unit's service manual for the indoor units specification.

| PUMY-HP36NKMU2 | Capacity (Btuh) | COP |
|----------------|-----------------|---------------|
| | -25°C / -13°F | -25°C / -13°F |
| Ductless | 33,000 | 1.5 |
| Mixed | 33,000 | 1.44 |
| Ducted | 33,000 | 1.4 |

Submittal Data: PUMY-HP36NKMU2

Piping

| | | |
|--|----------|-------------|
| Liquid Pipe Size O.D. (Flared) | In. [mm] | 3/8 [9.52] |
| Gas Pipe Size O.D. (Flared) | In. [mm] | 5/8 [15.88] |
| Total Piping Length when using Branch Box | Ft. [m] | 492 [150] |
| Total Piping Length without Branch Box | Ft. [m] | 984 [300] |
| Maximum Height Difference ^A , ODU above IDU | Ft. [m] | 164 [50] |
| Maximum Height Difference ^A , ODU below IDU | Ft. [m] | 131 [40] |
| Maximum Height Difference ^A , between branch boxes | Ft. [m] | 49 [15] |
| Maximum Height Difference between IDU and IDU without branch box | Ft. [m] | 49 [15] |
| Maximum Piping Length between ODU and Branch Box | Ft. [m] | 180 [55] |
| Farthest Piping Length from ODU to IDU with Branch Box | Ft. [m] | 262 [80] |
| Farthest Piping Length from ODU to IDU without Branch Box | Ft. [m] | 492 [150] |
| Farthest Piping Length after Branch Box | Ft. [m] | 82 [25] |
| Total Piping Length between Branch Boxes and IDU | Ft. [m] | 311 [95] |
| Maximum Number of Bends for IDU | Ft. [m] | 15 |

^AA Branch box should be placed within the level between the outdoor unit and indoor units.

The outdoor unit is lower: 131ft [40m] or less (98ft [30.] or less if PKFY-P04/06/08/12NLMU, PFFY-P06/08/12NEMU, and PFFY-P06/08/12NRMU are included.)

| Optional Accessories | Description | Model No. |
|-----------------------|----------------------------|--|
| Branch Box | 3 Port Branch Box | PAC-MKA32BC |
| | 3 Port Branch Box | PAC-MKA33BC |
| | 5 Port Branch Box | PAC-MKA52BC |
| | 5 Port Branch Box | PAC-MKA53BC |
| Branch Joint | T-Branch | CMY-Y62-G-E |
| Header | 4 Branch | CMY-Y64-G-E |
| | 8 Branch | CMY-Y68-G-E |
| Centralized Drain Pan | Central Drain Pan | PAC-SH97DP-E |
| Control/Service Tool | Maintenance Tool Interface | PAC-USCMS-MN-1 |
| Distribution pipe | Brazed Connection | MSDD-50BR-E |
| | Flare Connection | MSDD-50AR-E |
| Drain Socket | Drain Socket | PAC-SG60DS-E |
| Port Adapter | Adaptor: 1/2" x 3/8" | MAC-A455JP-E |
| | Adaptor: 1/2" x 5/8" | MAC-A456JP-E |
| | Adaptor: 3/8" x 1/2" | MAC-A454JP-E |
| | Adaptor: 3/8" x 5/8" | PAC-SG76RJ-E |
| Snow/Wind Guard | Front | CM-S-FR-NKMU (two pieces are required) |
| Snow/Wind Guard | Rear | SG-1-RE |
| Snow/Wind Guard | Side | SG-1-SD |
| Snow/Wind Guard | Blocker | CM-S-BLK-NKMU |
| | | |
| | | |

Note: Mitsubishi Electric (MESCA) supports the use of only MESCA supplied and approved Snow Guard / Wind Deflectors / Windscreens and accessories for proper functioning of the unit(s).

Use of non-MESCA supported Snow Guard / Wind Deflectors / Windscreens and accessories will affect warranty coverage.

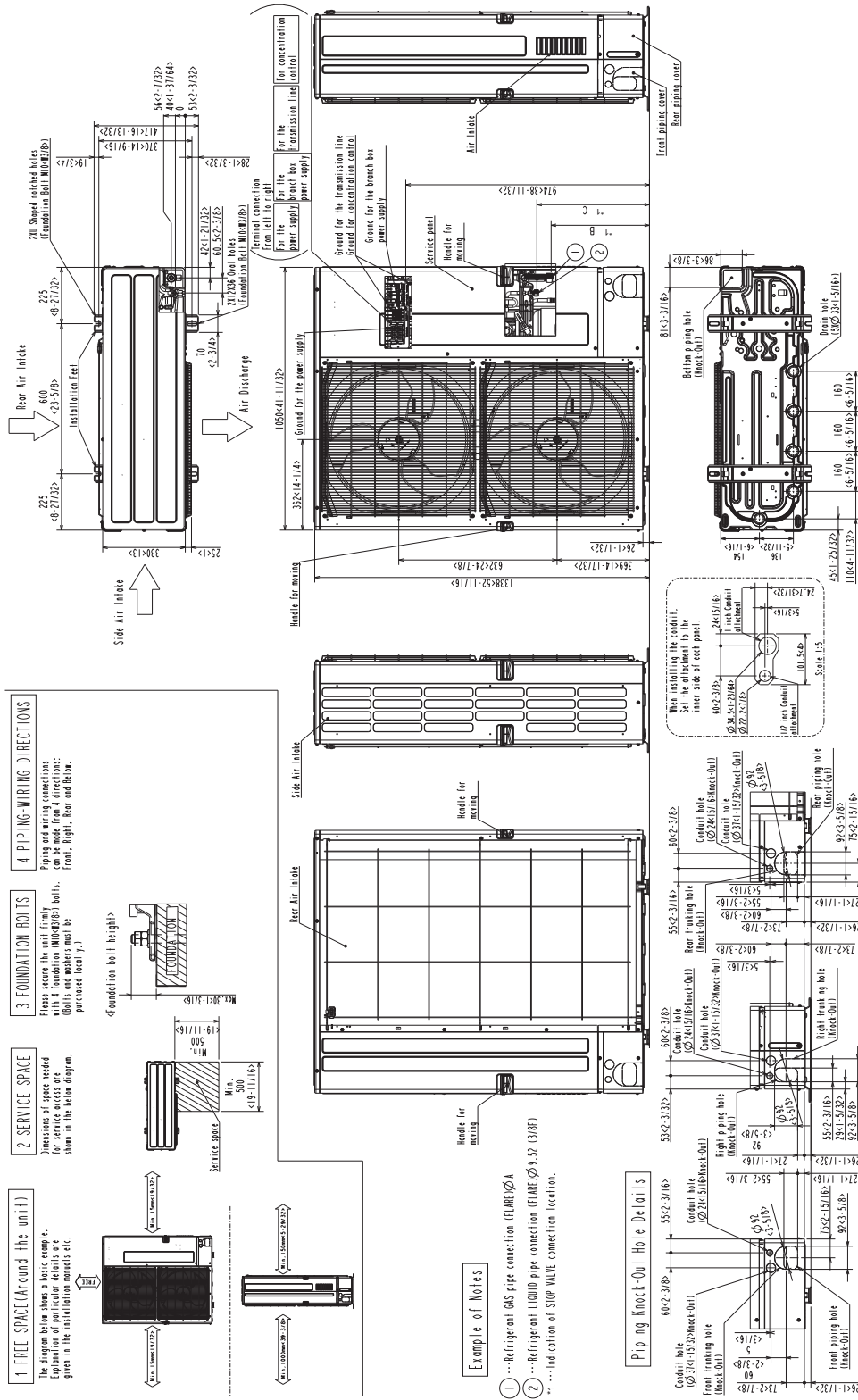
Should this document be altered or changed without MESCA's permission, it becomes null and void. MESCA assumes no responsibility for any consequences in such cases

All electrical work shall comply with National (CEC) and local codes and regulations.

Notes:

Outdoor Unit Outline and Dimensions:

Unit: mm(in)



| MODELS | A | B | C |
|----------------|--------------|------------------|------------------|
| PUMY-HP36NKMU2 | 15.88 (5/8F) | 426 < 16-25/32 > | 485 < 19-3/32 > |
| PUMY-HP42NKMU2 | 19.05 (3/4F) | 393 < 15-15/32 > | 450 < 17-23/32 > |
| PUMY-HP48NKMU2 | 15.88 (5/8F) | 426 < 16-25/32 > | 485 < 19-3/32 > |

