

Job Name:

Schedule Reference:

Date:

### OUTDOOR VRF SYSTEM FEATURES

- Single-phase outdoor unit with variable refrigerant flow (VRF) zoning technology
- Inverter-driven (variable speed) compressor
- Total refrigerant piping length of 492' (150 m)
- Connects up to 12 indoor units
- Uses CITY MULTI indoor units and Controls Network
- Low ambient cooling operation down to -40°C available as an option(\*5 \*6)

### UNIT OPTION

- Standard Model.....PUMY-P60NKMU2
- Sea Coast (-BS) Model.....PUMY-P60NKMU2-BS

### OPTIONAL PARTS

- Branch Joint (T-Branch) ..... CMY-Y62-G-E
- Header - Four Branch ..... CMY-Y64-G-E
- Header - Eight Branch ..... CMY-Y68-G-E
- Base Heater ..... PAC-SJ20BH-E
- Snow/Wind Guard (x2) ..... CM-S-FR-NKMU
- Snow/Wind Guard Rear ..... SG-1-RE
- Snow/Wind Guard Side ..... SG-1-SD
- Snow/Wind Guard Blocker ..... CM-S-BLK-NKMU

**Note: Mitsubishi Electric (MESCA) supports the use of only MESCA supplied and approved Snow Guard / Wind Deflectors / Windscreens and accessories for proper functioning of the unit(s). Use of non-MESCA supported Snow Guard / Wind Deflectors / Windscreens and accessories will affect warranty coverage.**

Specifications		Model Name
Unit Type		PUMY-P60NKMU2 (-BS)
Nominal Cooling Capacity	Btu/h *1	60,000
Nominal Heating Capacity	Btu/h *2	66,000
Operating Temperature Range	Cooling (Outdoor) *3 *4	23°F ~ 115°F (-5°C ~ +46°C) DB
	Heating (Outdoor)	-13°F ~ +59°F (-25°C ~ +15°C) WB
External Dimensions (H x W x D)	In. / mm	52-11/16 x 41-11/32 x 13 (+1) / 1,338 x 1050 x 330 (+25)
External Finish / Colour		Galvanized sheets (+power coating for -BS type) / Munsell No.3Y 7.8/1.1
Net Weight	Lbs. / kg	295 / 134
Electrical Power Requirements	Voltage, Phase, Hertz	208 / 230V, 1-phase, 60Hz
Minimum Circuit Ampacity (MCA) *	A	36
Maximum Overcurrent Protection	A	45
Piping Diameter (Flared) (In. / mm)	Liquid (High Pressure)	3/8 / 9.52
	Gas (Low Pressure)	3/4 / 19.05
Indoor Unit	Total Capacity	50 to 130% of Outdoor Unit Capacity
	Model / Quantity	P05 to P72 / 1 to 12
Sound Pressure Levels	dB(A) Clg / Htg	58 / 59
Fan		
Type x Quantity (kW)		Propeller Fan x 2 - (0.2 + 0.2)
Airflow Rate	CFM	4,879
Compressor Operating Range	Cooling	29% to 100%
	Heating	24% to 100%
Compressor Type x Quantity		INVERTER-driven Scroll Hermetic x 1
Compressor Motor Output	kW	3.9
Refrigerant		R410A: 11lbs. + 4oz. (5.1kg)
Lubricant		FVC68D (2.3 liters)
High-pressure Protection Device		High pressure Switch, High pressure Sensor
Compressor Protection Device		Compressor thermistor, Overcurrent detection
Inverter Circuit Protection Device		Overcurrent detection, Overheat detection (Heat sink thermistor)
AHRI Ratings Ducted / Non-Ducted	EER	11.1 / 13.3
	SEER	17.8 / 20.0
	COP	NA
	HSPF	10.7 / 12.0
<b>Blue Fin Anti-corrosion Protection:</b> Cellulose- and polyurethane-resin coating treatment applied to condenser coil that protects it from air contaminants; ≥1µm thick; Salt Spray/Test Method - no unusual rust development to 960 hours.		

Notes:

- \*1. Nominal cooling conditions (subject to ISO 15042)  
Indoor: 27°C D.B./19°C W.B. (81°F D.B./66°F W.B.), Outdoor: 35°C D.B. (95°F D.B.)  
Pipe length: 7.5 m (24-9/16 ft.), Level difference: 0 m (0 ft.)
- \*2. Nominal heating conditions (subject to ISO 15042)  
Indoor: 20°C D.B. (68°F D.B.), Outdoor: 7°C D.B./6°C W.B. (45°F D.B./43°F W.B.)  
Pipe length: 7.5 m (24-9/16 ft.), Level difference: 0 m (0 ft.)
- \*3. 50 to 115°F (-15 to 46°C) D.B.: When connecting PKFY-P06NBMU, PKFY-P08NHMU, PFFY-P06/08/12NEMU, and PFFY-P06/08/12NRMU type indoor unit.
- \*4. 5 to 115°F (-15 to 46°C) D.B.: When using an optional front wind baffle.  
However, this condition does not apply to the indoor units listed in \*3.
- \*5. For -40°C cooling ONLY operation a low ambient kit is required along with a front wind deflector. Heating operation is not permitted.
- \*6. For Low-Ambient Cooling operation, dip switch SW 3 #1 must be switched to the ON position in the indoor unit to disable heating mode.

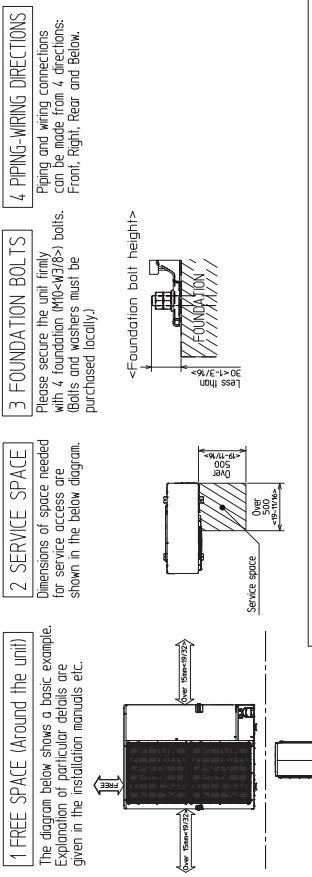
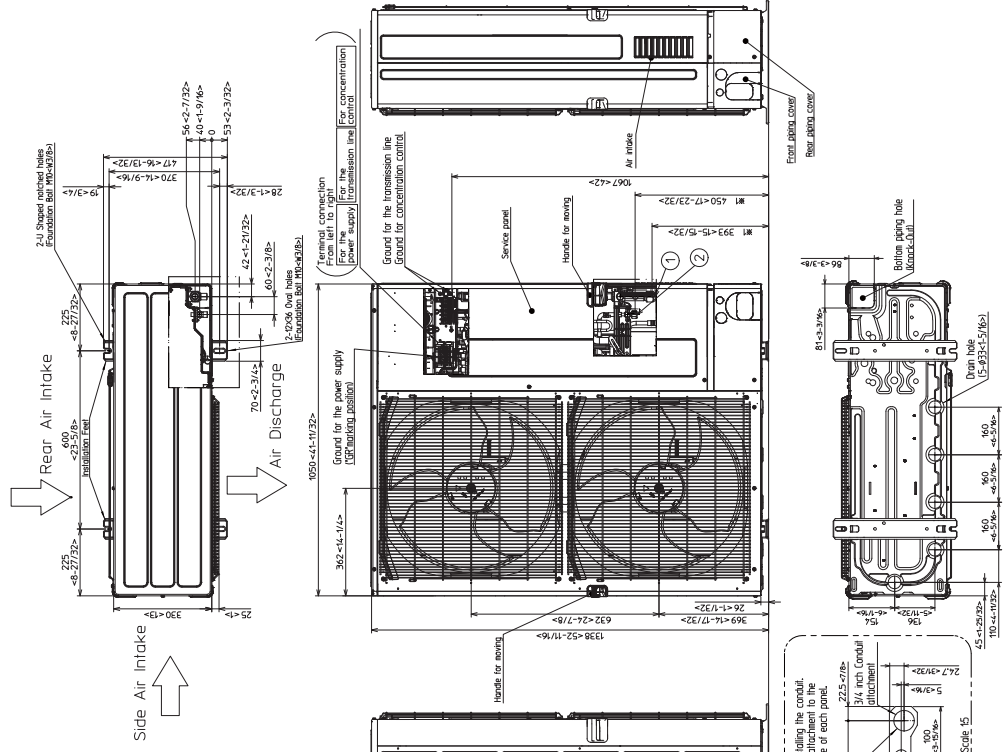
Specifications are subject to change without notice.

\* All electrical work shall comply with National (NEC) and local codes and regulations.

\*Should this document be altered or changed without MESCA's permission, it becomes null and void. MESCA assumes no responsibility for any consequences in such cases.

# Model: PUMY-P60NKMU2 (-BS) - DIMENSIONS

Unit: mm (in)



### 1 FREE SPACE (around the unit)

The diagram below shows a basic example. Explanation of particular details are given in the installation manuals etc.

### 2 SERVICE SPACE

Dimensions of space needed for service access are shown in the below diagram.

### 3 FOUNDATION BOLTS

Please secure the unit firmly with 4 foundation (M10-M12(8-)) bolts. (Bolts and washers must be purchased locally.)

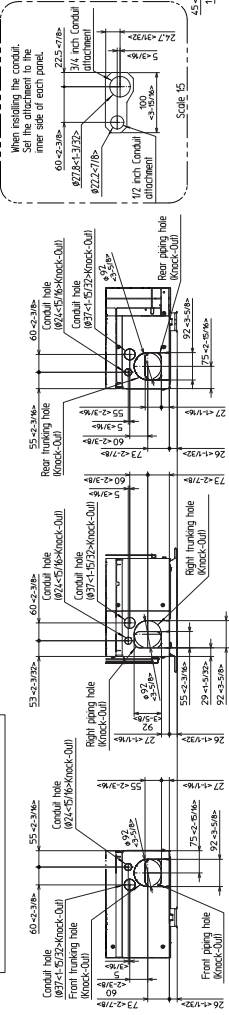
### 4 PIPING-WIRING DIRECTIONS

Piping and wiring connections can be made from 4 directions: Front, Right, Rear and Below.

### Example of Notes

- ① .. Refrigerant GAS pipe connection (FLARE) Ø 9.1 (3/4F)
- ② .. Refrigerant LIQUID pipe connection (FLARE) Ø 9.52 (3/8F)
- ⓧ .. Indication of STOP VALVE connection location.

### Piping Knock-Out Hole Details



\*Should this document be altered or changed without MESCA's permission, it becomes null and void. MESCA assumes no responsibility for any consequences in such cases.

