

Job Name:

Schedule Reference:

Date:



GENERAL FEATURES

- Dual set point functionality (*1)
- **Heats water to 115° F (46° C)**
 - Hydronic heat exchanger transfers energy from refrigerant to water
 - Can be used to recover waste heat from cooling operation to water, resulting in large energy savings
 - Applications include radiant heating, melting snow, reheating air, preheating hot water and many other uses
- **Cools water to 50° F (10° C)**
 - Can be used for precooling outside air, cooling pool water, misting stations, process cooling and more
- Unit is not suitable for direct potable water flow
- Connectable with CITY MULTI R2, Y, H2i, WR2 and WY systems
- Y-strainer included
- Flow switch included

* Cooling | Outdoor: 95° F (35° C) DB
Inlet Water Temperature: 74° F (23° C)
Water Flow Rate: 8.4 GPM

Heating | Outdoor: 47° F (8° C) DB / 43° F (6° C) WB
Inlet Water Temperature: 86° F (30° C)
Water Flow Rate: 9.4 GPM

Design notes:

- the unit is not designed for outside installation
- please don't use the steel material for the water piping material
- always make water circulate or add the brine to the circulation water when ambient temperature becomes 0°C (32°F) or less
- always make water circulate or pull out the circulation water completely when not using it
- do not use groundwater and well water
- Install unit in an environment where the wet bulb temperature will not exceed 32°C (92°F)
- the water circuit must use closed circuit
- please do not use as a drinking water

Note:

*1 – All components of the system must be compatible. For more details on system compatibility, please refer to Technical Bulletin 100-151 available on our website.

Notes:

SPECIFICATIONS

Capacity*

Cooling.....36,200 Btu/h
Heating.....39,900 Btu/h

Power

Power Source.....208 / 230V, 1-phase, 60Hz

Power Consumption.....0.015 kW

Current.....0.072 / 0.065 A

Minimum Circuit Ampacity (MCA).....0.09 A

Recommended Maximum Fuse/Breaker Size.....15 A

Controllers.....PAR-W21MAA

Cooling Operating Outdoor Temp. Range

PUHY-HP.....23° to +109° F DB (-5° to +43° C DB)

PURY/PUHY.....23° to +115° F DB (-5° to +46° C DB)

Heating Operating Outdoor Temp. Range

PURY/PQRY.....-4° F to +90° F WB (-20° C to +32° C WB)

PUHY/PQHY.....-4° F to +60° F WB (-20° C to +16° C WB)

Operating Inlet Water Temp. Range

Cooling.....50° F to 95° F (10° C to 35° C)

Heating.....50° F to 105° F (10° C to 41° C)

Leaving Water Temp. Range

Cooling.....41° F to 86° F (5° C to 30° C)

Heating.....86° F to 113° F (30° C to 45° C)

Connectable Outdoor Units.....PURY-P72~240T(Y(S))KMU (-BS)

PQRY-P72~240T(Y(S))HMU / PQHY-P72~360T(Y(S))HMU

PQRY-P72~240Z(S)KMU / PQHY-P72~360Z(S)KMU

PUHY-P72~360T(Y(S))KMU (-BS) / PUHY-HP72~192T(S)JMU (-BS)

External Finish.....Galvanized-steel Sheet

External Dimensions

Inches.....31-1/2 H x 17-3/4 W x 11-13/16 D

mm.....800 H x 450 W x 300 D

Net Weight.....78 lbs. / 35 kg

Refrigerant

Type.....R410A

Design Pressure.....4.15 MPa / 601 psi

Circulating Water

Operation Volume Range..... 4.85-9.5 GPM / 18-36 L/m

Design Pressure.....1 MPa / 145 psi

Refrigerant Piping Dimensions

Liquid (High Pressure).....3/8" / 9.52 mm

Gas (Low Pressure).....5/8" / 15.88 mm

Water Piping Dimensions

Inlet.....3/4" / 27.2 mm FPT

Outlet.....3/4" / 27.2 mm FPT

Drainpipe Dimension.....O.D. 1-1/4" / 32 mm

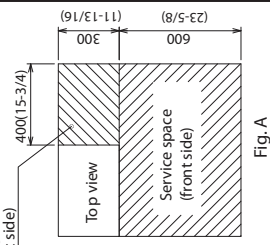
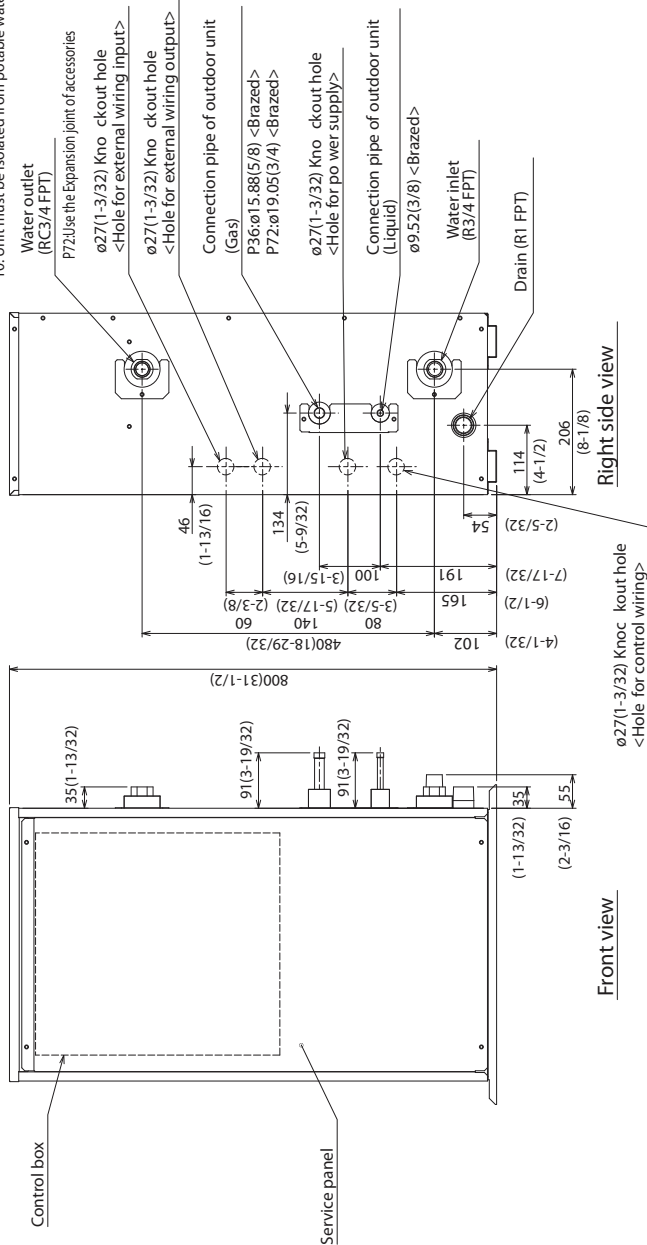
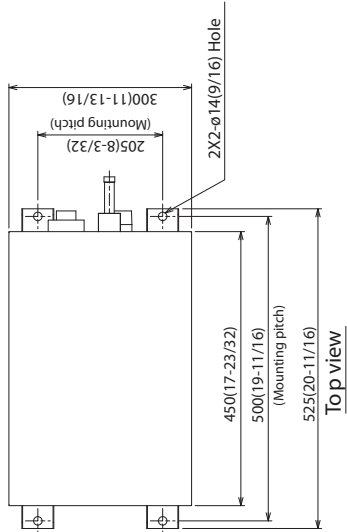
Sound Pressure Level.....29 dB(A)

Model: PWFY-P36NMU-E-AU – DIMENSIONS

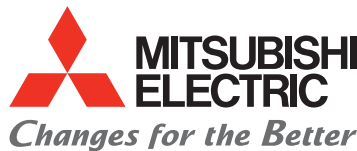
- <Included Accessories>
- Y-type strainer (RC3/4) 1pc.
 - Heat Insulation material 1pc.
 - Connector set 2set
 - Washer 2pcs.
 - Expansion joint(P72) 2pcs.
- [From RC3/4 to RC1]

Note 1. Seal around connection openings to prevent moisture from entering the unit.

2. Ensure adequate service space is right around the unit, according to Fig A.
3. Please always make water circulate or add the brine to the circulation water when the ambient temperature becomes 0degC(32 °F) or less.
4. The unit is not designed for outside installations.
5. Install the unit in an environment where the wet bulb temperature will not exceed 32degC(90 °F).
6. Please always make water circulate or pull out the circulation water completely when not using it.
7. The water circuit must use the closed circuit.
8. Please don't use the steel material for the water piping material.
9. Connect the strainer which is put as accessory to water inlet pipe.
10. Unit must be isolated from potable water system.



<Unit:mm (in) >



for a greener tomorrow

