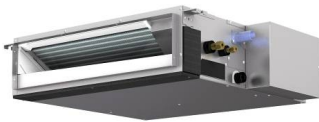


**SEZ-KD12NA4R1 & SUZ-KA12NAHZ**

12,000 Btu/h Horizontal Ducted Heat Pump

Job Name:	Location:	Date:
Purchaser:	Submitted by:	
Submitted to:	Reference	Approval
System Designation:	Schedule Number #:	
Engineer:		



<b>Energy Efficiency</b>	SEER	19.0
	EER	13.0
	HSPF	10.2

**Accessories:**

- Windscreens (ME-FR-24)
- External Fan/Heater Control Adapter (PAC-YU25HT-G)
- Cable Connector of Remote Sensor (PAC-SA88HA-EP)\*
- \*Allows control of several units with multiple remote control display

**Optional Controls:**

- Wireless Controller (MHK1)
- Wired Remote Controller (PAR-40MAA)
- Simple MA Remote Controller (PAC-YT53CRAU-J)
- System Control Interface (MAC-334IF-E)
- Wireless Remote (PAR-FL32MA-E) (Requires PAR-FA32MA-E)
- Remote Temperature Sensor (PAC-SE41TS-E)

Indoor unit	MCA (*)	A	1
	Fan Motor	F.L.A	0.57
	Fan Motor Output	W	96
	Air flow (Lo-Mid-Hi)	DRY(CFM)	247-317-388
		WET(CFM)	222-285-349
	External Static Pressure	in WG	0.02-0.06-0.14-0.20
	Sound Pressure Level (Lo-Mid-Hi)	dB (A)	23-28-33
	External Finish Color	Galvanized-Steel Sheets	
	Dimensions	W: in	39
		D: in	27-9/16
		H: in	7-7/8
	Weight Unit	lbs	50
	Field Drainpipe O.D.	in	O.D. 1-1/4
	Refrigerant pipe Gas	in	3/8
	Refrigerant pipe Liquid	in	1/4
Moisture Removal	Pints/h	2.5	
Sensible Heat Factor		0.76	

\*All electrical work shall comply with National (CEC), local codes and regulations.

Should this document be altered or changed without MESCA's permission, it becomes null and void. MESCA assumes no responsibility for any consequences in such cases.

Note: Mitsubishi Electric (MESCA) supports the use of only MESCA supplied and approved accessories for proper functioning of the unit(s). Use of non-MESCA supported accessories will affect warranty coverage.

**SEZ-KD12NA4R1 & SUZ-KA12NAHZ**

Outdoor unit	MCA (*)	A	14	
	MOCP (*) (Breaker)	A	24 (15)	
	Fan Motor	F.L.A.	0.67	
	Compressor	Model(Type)	DC INVERTER-Driven Twin Rotary	
		R.L.A.	10	
		L.R.A.	12.5	
	Air flow (Cooling/Heating)	CFM	(1,691/1,691)	
	Refrigerant Control	Linear Expansion Valve		
	Defrost Method	Reverse Cycle		
	SPL (Cooling)	dB (A)	54	
	SPL (Heating)	dB (A)	55	
	External Finish Color	Munsell No.3Y 7.8/1.1		
	Dimension	W: in	33-1/16	
		D: in	13	
H: in		34-5/8		
Weight	lbs	129		
Remote Controller	Type	Wired Remote Controller		
Refrigerant	Type	R410A		
	Charge	lbs, oz	3,9	
	Oil	Type(Fl.oz.)	FV50S(22.0)	
Refrigerant Pipe	Gas side O.D.	in	3/8	
	Liquid side O.D.	in	1/4	
	Height Difference (Max)	ft	40	
	Length (Max.)	ft	65	
Connection Method	Indoor/Outdoor			
Operation Guarantee	Cooling	°F	14 - 115	
	Heating	°F	- 13 - 75	

Power supply	Voltage, Phase, Cycle	1-phase, 60Hz, 208/230V
Voltage	Indoor - Outdoor S1-S2	AC 208/230V
	Indoor - Outdoor S2-S3	DC12-24V
	Indoor - Remote controller	DC12V

		MAX (Btu)	MAX RATED INPUT (W)	RATED (Btu)	RATED TOTAL INPUT (W)	COP
Heating	47°F	19,080	1,609	15,900	1,148	3.47
	17°F	14,490	1,271	9,825	907	3.34
	5°F	14,490	990	6,450	706	2.68
	-4°F	10,360	755	3,859	539	2.10
	-13°F	6,231	502	956	358	.78
Cooling	80°F	13,334	811	13,334	811	4.82

\* COP at MAX capacity

NOTES : \*1.Rating conditions (cooling)-Indoor : D.B. 26.7°C(80°F), W.B. 19.4°C(67°F) Outdoor : D.B. 35°C(95°F), W.B. 23.9°C(75°F)  
(heating)-Indoor : D.B. 21.1°C(70°F), W.B. 15.6°C(60°F) Outdoor : D.B. 8.3°C(47°F), W.B. 6.1°C(43°F)  
\*2.Rating conditions(heating)-Indoor : D.B. 21.1°C(70°F), W.B. 15.6°C(60°F) Outdoor : D.B. -8.3°C(17°F), W.B. -9.4°C(15°F)

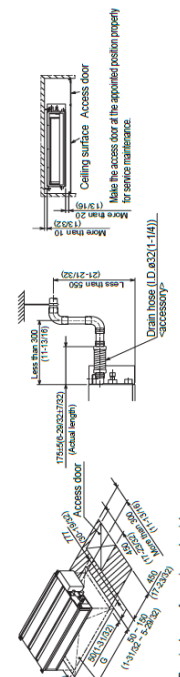
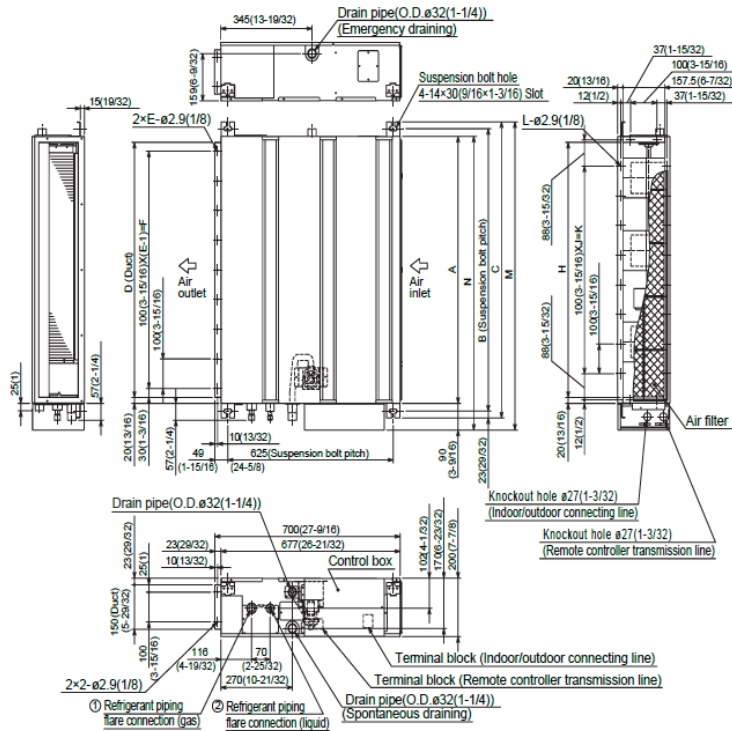
Operation range		Indoor intake air temperature		Outdoor intake air temperature	
Cooling	Maximum	D.B. 35°C(95°F), W.B. 21.7°C(71°F)	D.B. 46°C(115°F)		
	Minimum	D.B. 19.4°C(67°F), W.B. 13.9°C(57°F)	D.B. -10°C(14°F)		
Heating	Maximum	D.B. 26.7°C(80°F), W.B. 19.4°C(67°F)	D.B. 24°C(75°F), W.B. 18°C(65°F)		
	Minimum	D.B. 21.1°C(70°F), W.B. 15.6°C(60°F)	D.B. -25°C(-13°F), W.B. -26°C(-14°F)		

\*All electrical work shall comply with National (CEC), local codes and regulations.

Should this document be altered or changed without MESCA's permission, it becomes null and void. MESCA assumes no responsibility for any consequences in such cases.

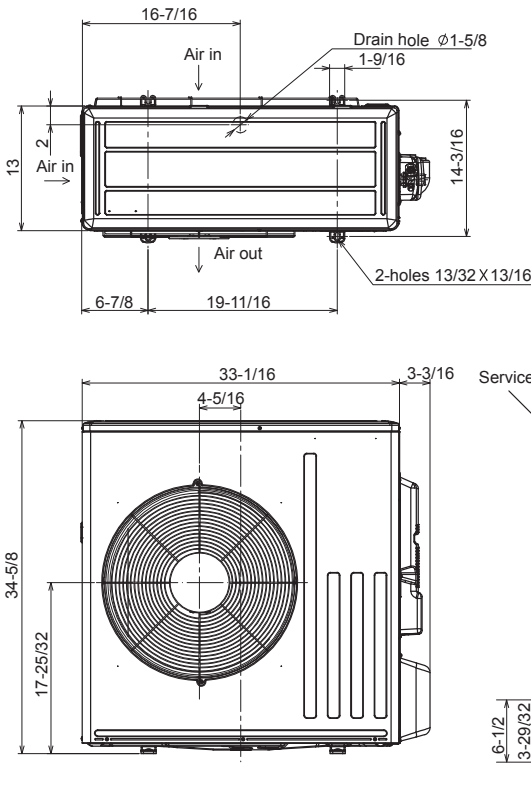
Note: Mitsubishi Electric (MESCA) supports the use of only MESCA supplied and approved accessories for proper functioning of the unit(s). Use of non-MESCA supported accessories will affect warranty coverage.

**SEZ-KD12NA4R1 & SUZ-KA12NAHZ**



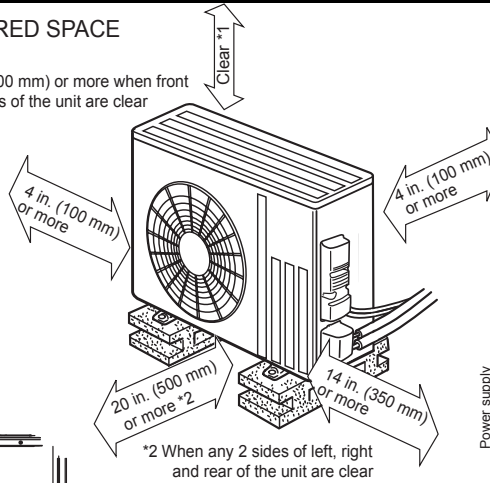
mm (in.)		① Gas pipe												② Liquid pipe			
Size	Capacity	A	B	C	D	E	F	G	H	J	K	L	M	N	ø	ø	
09	kBtu/h	700	752	796	660	660	660	660	660	660	660	660	660	660	660	660	ø9.52(ø3/8)
12	kBtu/h	800	872	896	660	660	660	660	660	660	660	660	660	660	660	660	ø12.7(ø1/2)
15	kBtu/h	900	972	996	660	660	660	660	660	660	660	660	660	660	660	660	ø12.7(ø1/2)
18	kBtu/h	1100	1152	1196	1060	1060	1060	1060	1060	1060	1060	1060	1060	1060	1060	1060	ø12.7(ø1/2)

Note 1. Use M10 screw for the suspension bolt (field supply).  
 Note 2. Keep the service space for the maintenance at the bottom.  
 Note 3. This chart indicates for size 15 kBtu/h model, which has 3 fans.  
 Note 4. Sizes 09, 12 kBtu/h models have 2 fans.  
 Note 5. Sizes 09, 12 kBtu/h models have 4 fans.  
 Note 6. When an inlet duct is used, remove the air filter (supply with the unit), then install the filter (field supply) at suction side.



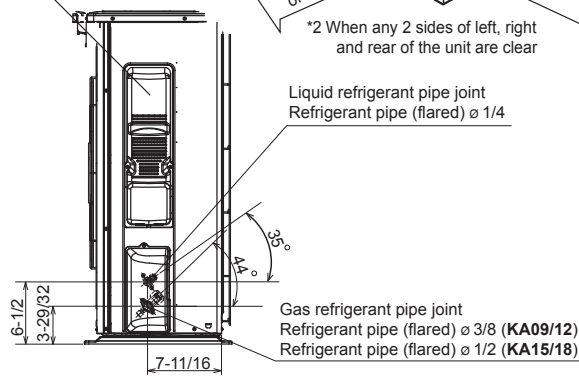
**REQUIRED SPACE**

\*1 20 in. (500 mm) or more when front and sides of the unit are clear

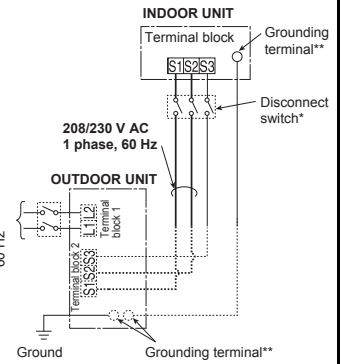


\*2 When any 2 sides of left, right and rear of the unit are clear

**Service panel**



Power supply  
208/230VAC,  
1 phase 2 wires,  
60 Hz



**Remark:**  
 \* A disconnect switch is required.  
 Check the local code.  
 \*\* Use a ring tongue terminal in order to connect a ground wire to terminal.



\*All electrical work shall comply with National (CEC), local codes and regulations.

Should this document be altered or changed without MESCA's permission, it becomes null and void. MESCA assumes no responsibility for any consequences in such cases.

Note: Mitsubishi Electric (MESCA) supports the use of only MESCA supplied and approved accessories for proper functioning of the unit(s). Use of non-MESCA supported accessories will affect warranty coverage.