

SEZ-KD15NA4R1 & SUZ-KA15NAHZ

15,000 Btu/h Horizontal Ducted Heat Pump

Job Name:	Location:	Date:
Purchaser:	Submitted by:	
Submitted to:	Reference	Approval
System Designation:	Schedule Number #:	
Engineer:		



Energy Efficiency	SEER	17.3
	EER	12.5
	HSPF	9.5

Accessories:

- Windscreens (ME-FR-24)
 - External Fan/Heater Control Adapter (PAC-YU25HT-G)
 - Cable Connector of Remote Sensor (PAC-SA88HA-EP)*
- *Allows control of several units with multiple remote control display

Optional Controls:

- Wireless Controller (MHK1)
- Wired Remote Controller (PAR-40MAA)
- Simple MA Remote Controller (PAC-YT53CRAU-J)
- System Control Interface (MAC-334IF-E)
- Wireless Remote (PAR-FL32MA-E) (Requires PAR-FA32MA-E)
- Remote Temperature Sensor (PAC-SE41TS-E)

Indoor unit	MCA (*)	A	1
	Fan Motor	F.L.A	0.74
	Fan Motor Output	W	96
	Air flow (Lo-Mid-Hi)	DRY(CFM)	353-441-529
		WET(CFM)	317-396-476
	External Static Pressure	in WG	0.02-0.06-0.14-0.20
	Sound Pressure Level (Lo-Mid-Hi)	dB (A)	30-34-37
	External Finish Color	Galvanized-Steel Sheets	
	Dimensions	W: in	39
		D: in	27-9/16
		H: in	7-7/8
	Weight Unit	lbs	54
	Field Drainpipe O.D.	in	O.D. 1-1/4
	Refrigerant pipe Gas	in	1/2
	Refrigerant pipe Liquid	in	1/4
	Moisture Removal	Pints/h	2.8
	Sensible Heat Factor		0.8

*All electrical work shall comply with National (CEC), local codes and regulations.

Should this document be altered or changed without MESCA's permission, it becomes null and void. MESCA assumes no responsibility for any consequences in such cases.

Note: Mitsubishi Electric (MESCA) supports the use of only MESCA supplied and approved accessories for proper functioning of the unit(s). Use of non-MESCA supported accessories will affect warranty coverage.

SEZ-KD15NA4R1 & SUZ-KA15NAHZ

Outdoor unit	MCA (*)	A	17
	MOCP (*) (Breaker)	A	31 (20)
	Fan Motor	F.L.A.	1
	Compressor	Model(Type)	DC INVERTER-Driven Twin Rotary
		R.L.A.	13
		L.R.A.	16
	Air flow (Cooling/Heating)	CFM	(2,020/1,930)
	Refrigerant Control		Linear Expansion Valve
	Defrost Method		Reverse Cycle
	SPL (Cooling)	dB (A)	55
	SPL (Heating)	dB (A)	55
	External Finish Color		Munsell No.3Y 7.8/1.1
	Dimension	W: in	33-1/16
D: in		13	
H: in		34-5/8	
Weight	lbs	131	
Remote Controller	Type		Wired Remote Controller
Refrigerant	Type		R410A
	Charge	lbs, oz	3,12
	Oil	Type(Fl.oz.)	FV50S(23.7)
Refrigerant Pipe	Gas side O.D.	in	1/2
	Liquid side O.D.	in	1/4
	Height Difference (Max)	ft	40
	Length (Max.)	ft	65
Connection Method	Indoor/Outdoor		
Operation Guarantee	Cooling	°F	14 - 115
	Heating	°F	- 13 - 75

Power supply	Voltage, Phase, Cycle	1-phase, 60Hz, 208/230V
Voltage	Indoor - Outdoor S1-S2	AC 208/230V
	Indoor - Outdoor S2-S3	DC12-24V
	Indoor - Remote controller	DC12V

		MAX (Btu)	MAX RATED INPUT (W)	RATED (Btu)	RATED TOTAL INPUT (W)	COP
Heating	47°F	23,744	2,890	19,080	1,968	2.41
	17°F	18,032	2,284	11,790	1,555	2.31
	5°F	18,032	1,777	7,740	1,210	1.87
	-4°F	12,893	1,357	4,630	924	1.47
	-13°F	7,754	902	1,148	614	0.55
Cooling	80°F	16,680	1,058	16,680	1,058	4.62

* COP at MAX capacity

NOTES : *1.Rating conditions (cooling)-Indoor : D.B. 26.7°C (80°F), W.B. 19.4°C (67°F) Outdoor : D.B. 35°C (95°F), W.B. 23.9°C (75°F)
(heating)-Indoor : D.B. 21.1°C (70°F), W.B. 15.6°C (60°F) Outdoor : D.B. 8.3°C (47°F), W.B. 6.1°C (43°F)
*2.Rating conditions (heating)-Indoor : D.B. 21.1°C (70°F), W.B. 15.6°C (60°F) Outdoor : D.B. -8.3°C (17°F), W.B. -9.4°C (15°F)

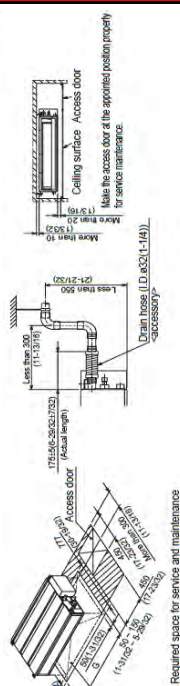
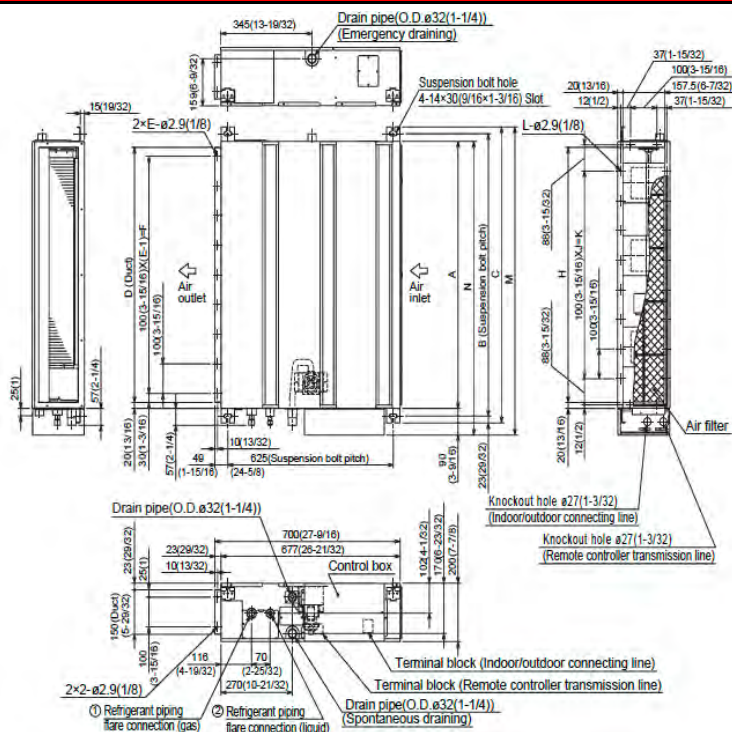
Operation range		Indoor intake air temperature	Outdoor intake air temperature
Cooling	Maximum	D.B. 35°C (95°F), W.B. 21.7°C (71°F)	D.B. 46°C (115°F)
	Minimum	D.B. 19.4°C (67°F), W.B. 13.9°C (57°F)	D.B. -10°C (14°F)
Heating	Maximum	D.B. 26.7°C (80°F), W.B. 19.4°C (67°F)	D.B. 24°C (75°F), W.B. 18°C (65°F)
	Minimum	D.B. 21.1°C (70°F), W.B. 15.6°C (60°F)	D.B. -25°C (-13°F), W.B. -26°C (-14°F)

*All electrical work shall comply with National (CEC), local codes and regulations.

Should this document be altered or changed without MESCA's permission, it becomes null and void. MESCA assumes no responsibility for any consequences in such cases.

Note: Mitsubishi Electric (MESCA) supports the use of only MESCA supplied and approved accessories for proper functioning of the unit(s). Use of non-MESCA supported accessories will affect warranty coverage.

SEZ-KD15NA4R1 & SUZ-KA15NAHZ

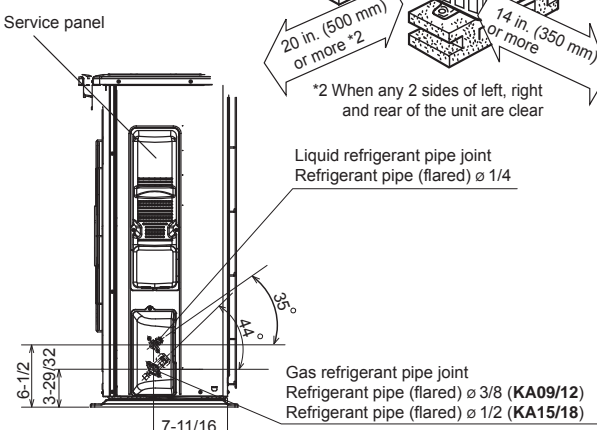
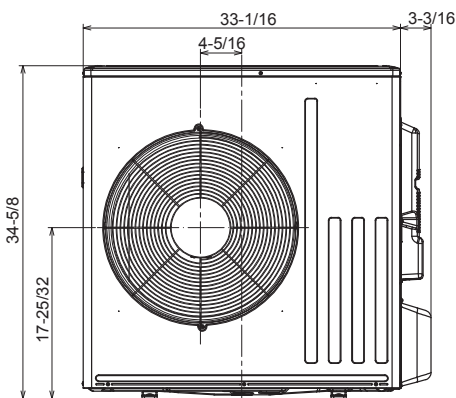
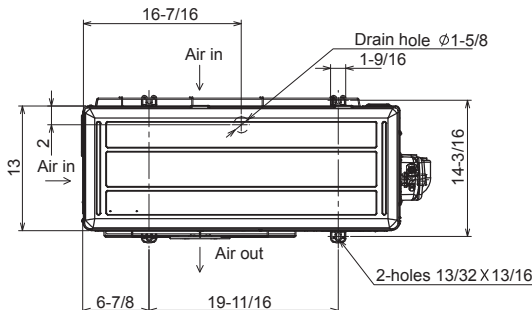


mm (in.)	A	B	C	D	E	F	G	H	J	K	L	M	N
① Gas pipe	700	752	796	660	660	660	660	660	660	660	660	660	660
② Liquid pipe	700	752	796	660	660	660	660	660	660	660	660	660	660
ø6.35(1/4)													
ø12.7(1/2)													

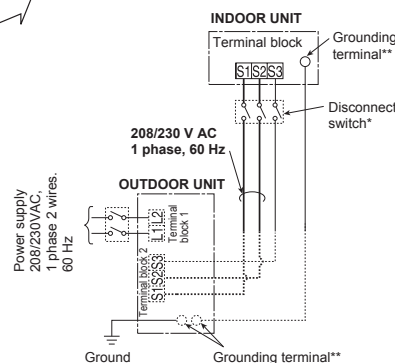
Note 1. Use M10 screw for the suspension bolt (field supply).
2. Keep the service space for the maintenance at the bottom.
3. This chart indicates for size 15 kBTU/h model, which has 3 fans.
Size 09 kBTU/h model has 2 fans.
Size 08 kBTU/h model has 4 fans.
4. When an inlet duct is used, remove the air filter (supply with the unit), then install the filter (field supply) at suction side.

REQUIRED SPACE

*1 20 in. (500 mm) or more when front and sides of the unit are clear



Unit: inch



Remark:
* A disconnect switch is required.
Check the local code.
** Use a ring tongue terminal in order to connect a ground wire to terminal.



*All electrical work shall comply with National (CEC), local codes and regulations.

Should this document be altered or changed without MESCA's permission, it becomes null and void. MESCA assumes no responsibility for any consequences in such cases.

Note: Mitsubishi Electric (MESCA) supports the use of only MESCA supplied and approved accessories for proper functioning of the unit(s). Use of non-MESCA supported accessories will affect warranty coverage.