

SUBMITTAL DATA: SLZ-KF09NA

9,000 BTU/H CEILING-CASSETTE INDOOR UNIT FOR MXZ MULTI-ZONE PUMP SYSTEMS

Job Name:	Location:	Date:
Purchaser:	Engineer:	
Submitted to:	For <input type="checkbox"/> Reference <input type="checkbox"/> Approval <input type="checkbox"/> Construction	
System Designation:	Schedule No.:	


SPECIFICATIONS:

Rated Capacity*		
Cooling ¹	Btu/h / W	9,000
Heating at 47° F ²	Btu/h / W	11,000

NOTES : ¹1.Rating conditions (cooling)-Indoor : D.B. 26.7°C (80°F), W.B. 19.4°C (67°F) Outdoor : D.B. 35°C (95°F), W.B. 23.9°C (75°F)
 (heating)-Indoor : D.B. 21.1°C (70°F), W.B. 15.6°C (60°F) Outdoor : D.B. 8.3°C (47°F), W.B. 6.1°C (43°F)
²2.Rating conditions(heating)-Indoor : D.B. 21.1°C (70°F), W.B. 15.6°C (60°F) Outdoor : D.B. -8.3°C (17°F), W.B. -9.4°C (15°F)

For data on specific indoor units (all ducted, all non-ducted, and both ducted and non-ducted) combinations, see the MXZ Technical and Service Manual.

Applications should be restricted to comfort cooling only; equipment cooling applications are not recommended for low ambient temperature conditions.

ACCESSORIES:

- Grille (SLP-18FAEU - Ordered separate) (w/3D i-see sensor) Wired
- Remote Sensor (PAC-SE41TS-E)
- Outside Air Sensor for MHK1 (MOS1)
- Wire for Remote on/off with CN32 connector (PAC-715AD)
- Connector and wire for Operation status/error using CN51 (PAC-725AD)
- Connector of CN32 (remote on/off) (PAC-SE55RA-E)
- Connector cable for remote display (PAC-SA88HA-EP)

Optional Controls

- Wired Remote Controller PAR-40MAA
- Simple MA Remote Controller (PAC-YT53CRAU-J)
- Thermostat Interface (PAC-US444CN-1)
- System Control Interface (MAC-334IF-E)
- Wireless Remote (PAR-SL100A-E)(Requires PAR-SF9FA-E)
- Backlit, Wall-mounted, Wireless Controller (MHK1)
- Portable Central Controller (MCCH1)

Electrical Power Requirements	208 / 230V, 1-Phase, 60 Hz	
-------------------------------	----------------------------	--

Minimum Circuit Ampacity (MCA) *	A	0.25
----------------------------------	---	------

Blower Motor (ECM)	F.L.A.	0.2
--------------------	--------	-----

Blower Motor Output	W	50
---------------------	---	----

Moisture Removal	pt/h	1.0
------------------	------	-----

Field Drainpipe Size O.D.	In.(mm)	1-1/4 (31.75) [Mechanical lift 33 (850)]
---------------------------	---------	--

Airflow Rate (Lo - Med - Hi)		
DRY	CFM	230-265-300
WET		207-239-270

Sound Pressure Level (Lo - Med - Hi)		
Cooling	dB(A)	25-28-31

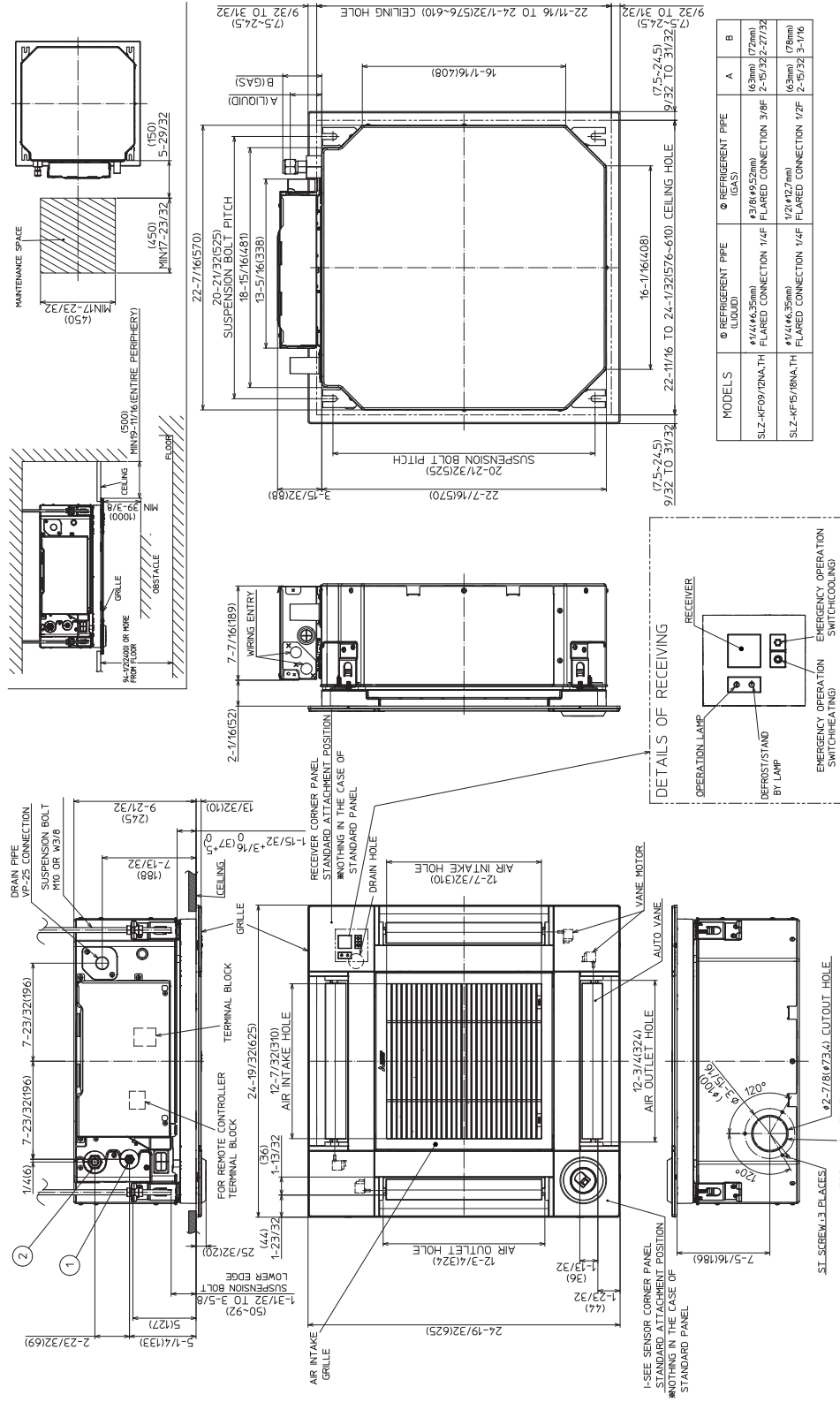
External Dimensions (H x W x D)	In.(mm)	8-3/16 X 22-7/16 X 22-7/16 (212 x 570 x 570)
---------------------------------	---------	---

Net Weight	Lbs.(kg)	30.6 (13.9)
------------	----------	-------------

External Finish	Munsell 1.0Y 9.2 / 0.2	
-----------------	------------------------	--

Refrigerant Piping (Flared)		
Liquid (High Pressure)	In.(mm)	1/4 (6.35)
Gas (Low Pressure)		3/8 (9.52)

DIMENSIONS: SLZ-KF09NA



Unit: in. (mm)

Should this document be altered or changed without MESCA's permission, it becomes null and void. MESCA assumes no responsibility for any consequences in such cases.

