

## SUBMITTAL DATA: SLZ-KF15NA1 & SUZ-KA15NAH2-MX

### 15,000 BTU/H CEILING-CASSETTE HEAT PUMP SYSTEM

|                     |  |       |
|---------------------|--|-------|
| Job Name:           | Location:  | Date: |
| Purchaser:          | Engineer:  |       |
| Submitted to:       | For <input type="checkbox"/> Reference <input type="checkbox"/> Approval <input type="checkbox"/> Construction |       |
| System Designation: | Schedule No.:  |       |


**ACCESSORIES:**

- Grille (SLP-18FAEU - Ordered separate) (w/3D i-see sensor)
- Wired Remote Sensor (PAC-SE41TS-E)
- Wire for Remote on/off with CN32 connector (PAC-715AD)
- Connector and wire for Operation status/error using CN51 (PAC-725AD)
- Connector of CN32 (remote on/off) (PAC-SE55RA-E)
- Connector cable for remote display (PAC-SA88HA-EP)

**Optional Controls**

- Wired Remote Controller PAR-41MAA
- Simple MA Remote Controller (PAC-YT53CRAU-J)
- Interface Module (RMF-CA200)
- System Control Interface (MAC-3341F-E)
- Wireless Remote (PAR-SL100A-E)(Requires PAR-SF9FA-E)
- Backlit, Wall-mounted, Wireless Controller (MHK2)

|                   |              |             |
|-------------------|--------------|-------------|
| Energy Efficiency | SEER / SEER2 | 19.8 / 20.7 |
|                   | EER / EER2   | 12.2 / 12.2 |
|                   | HSPF IV / V  | 9.6 / 8.3   |

NOTES : \*1.Rating conditions (cooling)-Indoor : D.B. 26.7°C (80°F), W.B. 19.4°C (67°F) Outdoor : D.B. 35°C (95°F), W.B. 23.9°C (75°F)  
 (heating)-Indoor : D.B. 21.1°C (70°F), W.B. 15.6°C (60°F) Outdoor : D.B. 8.3°C (47°F), W.B. 6.1°C (43°F)  
 \*2.Rating conditions(heating)-Indoor : D.B. 21.1°C (70°F), W.B. 15.6°C (60°F) Outdoor : D.B. -8.3°C (17°F), W.B. -9.4°C (15°F)

|         |         | Indoor intake air temperature |               | Outdoor intake air temperature |              |
|---------|---------|-------------------------------|---------------|--------------------------------|--------------|
|         |         | D.B.                          | W.B.          | D.B.                           | W.B.         |
| Cooling | Maximum | 35°C (95°F)                   | 21.7°C (71°F) | 46°C (115°F)                   |              |
|         | Minimum | 19.4°C (67°F)                 | 13.9°C (57°F) | -10°C (14°F)                   |              |
| Heating | Maximum | 26.7°C (80°F)                 | 19.4°C (67°F) | 24°C (75°F)                    | 18°C (65°F)  |
|         | Minimum | 21.1°C (70°F)                 | 15.6°C (60°F) | -20°C (-4°F)                   | -21°C (-5°F) |

Specifications are subject to change without notice

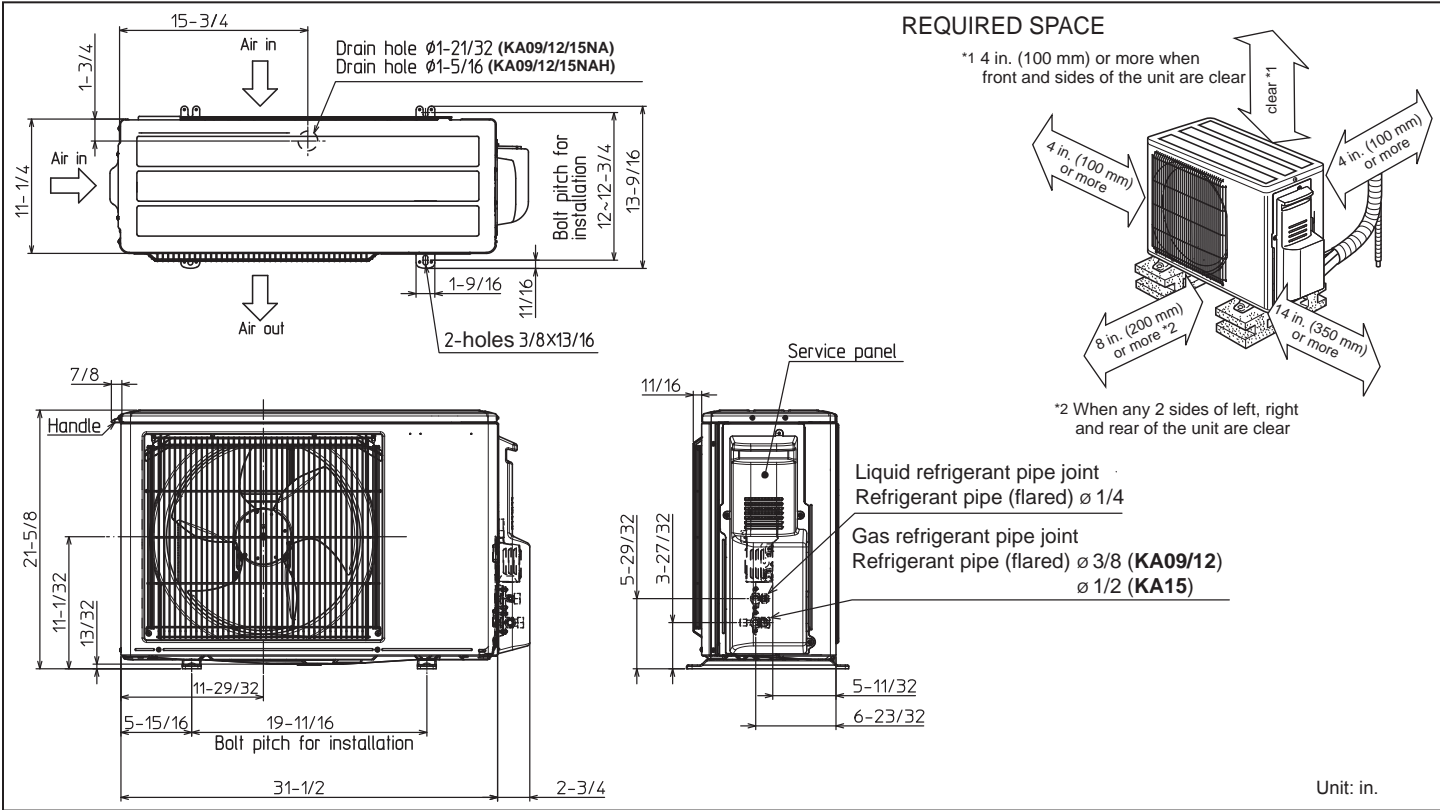
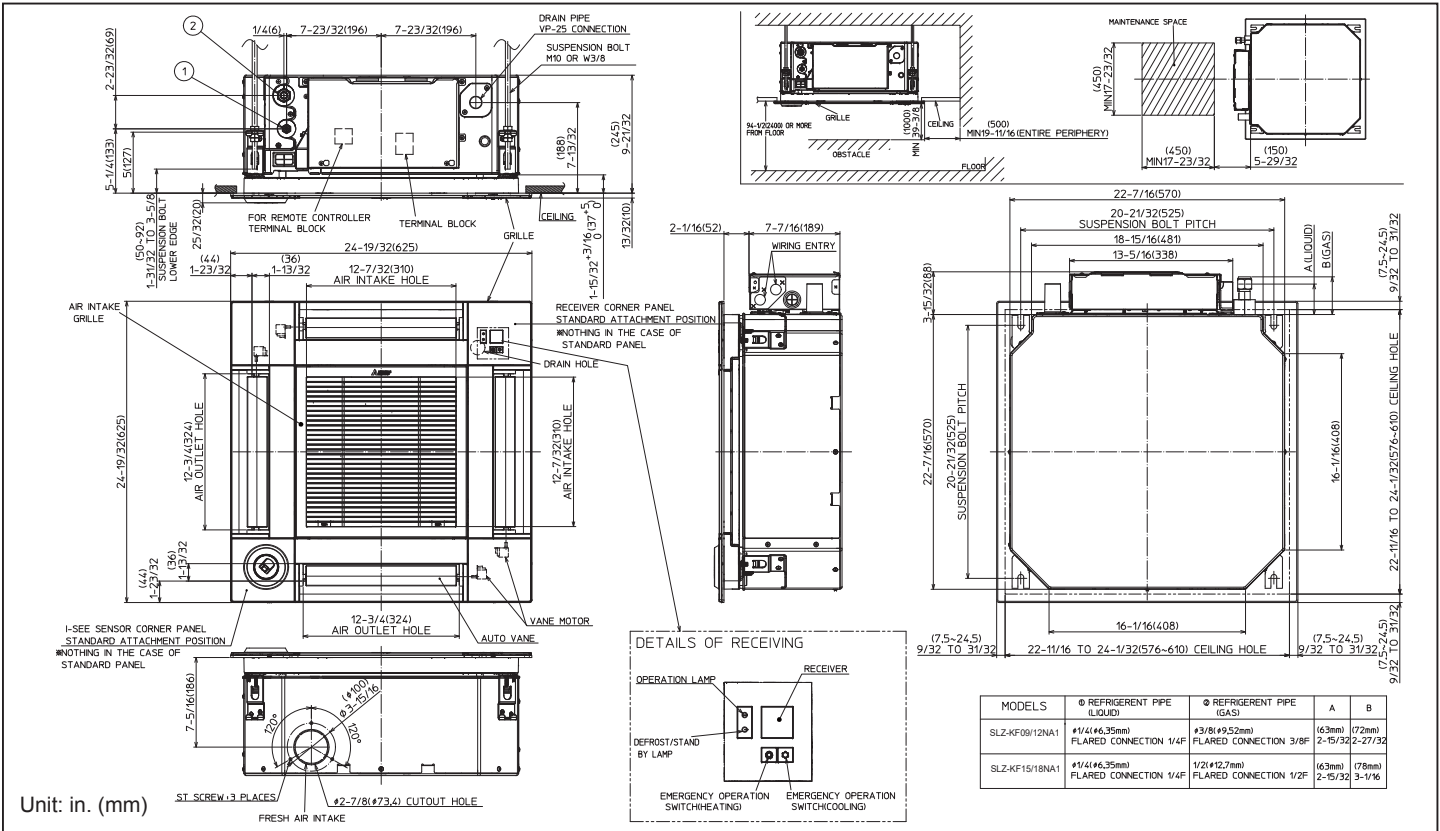
|                         |                                  |                         |                            |  |
|-------------------------|----------------------------------|-------------------------|----------------------------|--|
| Cooling                 | Rated Capacity                   | Btu/h                   | 14100                      |  |
|                         | Capacity Range                   | Btu/h                   | 5100-14100                 |  |
|                         | Total input                      | W                       | 1150                       |  |
|                         | Energy Efficiency                | EER                     | 12.2                       |  |
|                         | Moisture Removal                 | Pints/h                 | 19.8                       |  |
|                         | Sensible Heat Factor             |                         | 3.2                        |  |
|                         |                                  |                         | 0.75                       |  |
| Heating at 47°F         | Rated Capacity                   | Btu/h                   | 18000                      |  |
|                         | Capacity Range                   | Btu/h                   | 5100-19100                 |  |
|                         | Total input                      | W                       | 1730                       |  |
| Heating at 17°F         | Rated Capacity                   | Btu/h                   | 11900                      |  |
|                         | Rated Total input                | W                       | 1290(1420)                 |  |
|                         | Maximum Capacity                 | Btu/h                   | 11900                      |  |
|                         | Maximum Total Input              | W                       | 1290(1420)                 |  |
| Power supply            | Voltage, Phase, Cycle            | 208/230V, 1-phase, 60Hz |                            |  |
| Voltage                 | Indoor - Outdoor S1-S2           | AC 208/230V             |                            |  |
|                         | Indoor - Outdoor S2-S3           | DC12-24V                |                            |  |
|                         | Indoor - Remote controller       | DC12V                   |                            |  |
| Indoor unit             | MCA (*)                          | A                       | 0.4                        |  |
|                         | Fan Motor                        | F.L.A.                  | 0.32                       |  |
|                         | Fan Motor Output                 | W                       | 50                         |  |
|                         | Air flow (Lo-Mid-Hi)             | DRY(CFM)                | 245-315-405                |  |
|                         |                                  | WET(CFM)                | 221-284-365                |  |
|                         | External Static Pressure         | in WG                   | 0                          |  |
|                         | Sound Pressure Level (Lo-Mid-Hi) | dB (A)                  | 27-34-39                   |  |
|                         | External Finish Color            | Munsell 1.0Y 9.2/0.2    |                            |  |
|                         | Dimensions                       | W: in                   | 22-7/16                    |  |
|                         |                                  | D: in                   | 22-7/16                    |  |
|                         |                                  | H: in                   | 8-3/16                     |  |
|                         | Weight Unit                      | lbs                     | 30.6                       |  |
|                         | Field Drainpipe O.D.             | in                      | 1-1/4 [Mechanical lift 33] |  |
|                         | Refrigerant pipe Gas             | in                      | 1/2                        |  |
| Refrigerant pipe Liquid | in                               | 1/4                     |                            |  |

|                     |                            |                         |                                |  |
|---------------------|----------------------------|-------------------------|--------------------------------|--|
| Outdoor unit        | MCA (*)                    | A                       | 10                             |  |
|                     | MOCP (*)                   | A                       | 18                             |  |
|                     | Fan Motor                  | F.L.A.                  | 0.5                            |  |
|                     | Compressor                 | Model(Type)             | DC INVERTER-driven Twin Rotary |  |
|                     |                            | R.L.A.                  | 7.4                            |  |
|                     |                            | L.R.A.                  | 9.3                            |  |
|                     | Air flow (Cooling/Heating) | CFM                     | (1,243/1,229)                  |  |
|                     | Refrigerant Control        | Linear Expansion Valve  |                                |  |
|                     | Defrost Method             | Reverse Cycle           |                                |  |
|                     | SPL (Cooling)              | dB (A)                  | 49                             |  |
|                     | SPL (Heating)              | dB (A)                  | 51                             |  |
|                     | External Finish Color      | Munsell No.3Y 7.8/1.1   |                                |  |
|                     | Dimension                  | W: in                   | 31-1/2                         |  |
|                     |                            | D: in                   | 11-1/4                         |  |
| H: in               |                            | 21-5/8                  |                                |  |
| Weight              | lbs                        | 81                      |                                |  |
| Remote Controller   | Type                       | Wired Remote Controller |                                |  |
| Refrigerant         | Type                       | R410A                   |                                |  |
|                     | Charge                     | lbs, oz                 | 2,9                            |  |
|                     | Oil                        | Type(Fl.oz.)            | FV50S(11.8)                    |  |
| Refrigerant Pipe    | Gas side O.D.              | in                      | 1/2                            |  |
|                     | Liquid side O.D.           | in                      | 1/4                            |  |
|                     | Height Difference (Max)    | ft                      | 40                             |  |
|                     | Length (Max.)              | ft                      | 65                             |  |
| Connection Method   | Indoor/Outdoor             | Flared/Flared           |                                |  |
| Operation Guarantee | Cooling                    | °F                      | 14 - 115                       |  |
|                     | Heating                    | °F                      | -4 - 75                        |  |

Note: Mitsubishi Electric (MESCA) supports the use of only MESCA supplied and approved accessories for proper functioning of the unit(s). Use of non-MESCA supported accessories will affect warranty coverage.

\*All electrical work shall comply with National (NEC) and local codes and regulations. Should this document be altered or changed without MESCA's permission, it becomes null and void. MESCA assumes no responsibility for any consequences in such cases.

# DIMENSIONS: SLZ-KF15NA1 & SUZ-KA15NAH2-MX



Should this document be altered or changed without MESCA's permission, it becomes null and void. MESCA assumes no responsibility for any consequences in such cases.

